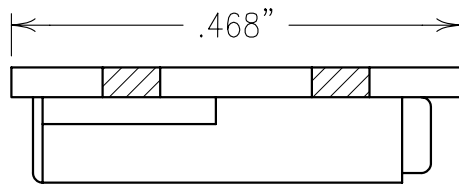


2

1

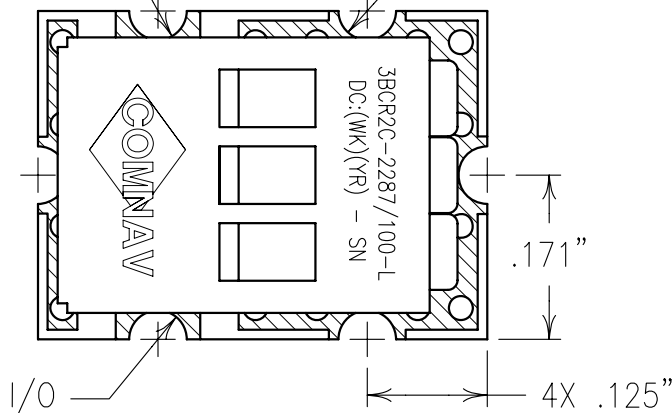


COPY

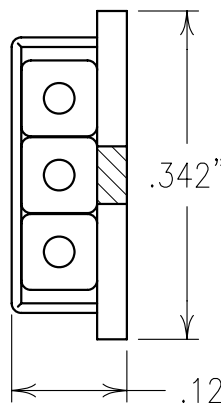
ELECTRICAL CHARACTERISTICS

CENTER FREQUENCY: 2287 MHz
 3 dB BANDWIDTH: >100 MHz
 INSERTION LOSS: <3.0 dB
 VSWR: 1.5:1 TYP.
 25 dBa REJECTION: $FO \pm 200$ MHz
 OPERATING TEMP.: -40 TO +85 °C

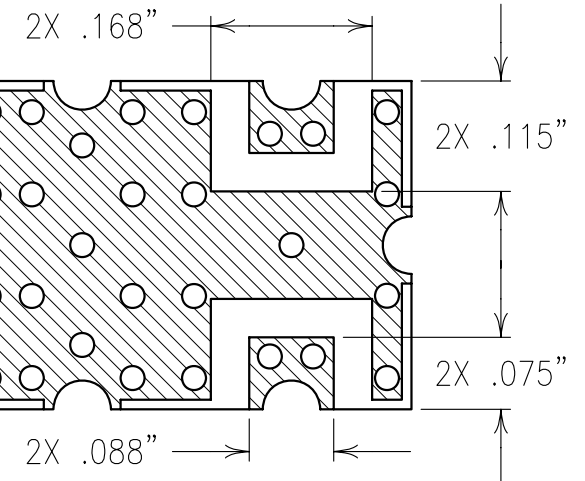
I/O .218" 4X GND



.031"



6X R.030"



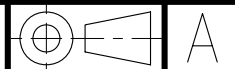
NOTES:

RECOMMENDED ATTACHMENT METHOD: SILVER EPOXY
 OR REFLOW NOT TO EXCEED AS INDICATED BELOW:
 TEMP.(°C) MAX.TIME(SEC)

215	90
230	60
245	30
260	15

FOR RECOMMENDED FOOTPRINT SEE FP0052.

Confidential and Proprietary information of ComNav Engineering Inc. Do Not Duplicate or Use Without Permission. ComNav Engineering Inc. claims Copyright in this document as of the Creation, last revision, and last updated dates. All Rights Reserved.



ENGLISH / METRIC ENGLISH	CHECKED BY						
TOLERANCES UNLESS OTHERWISE SPECIFIED	DRAWN BY PBF						
MACHINED SURFACES TO BE 125 / OR BETTER	ENGINEER MJG	II	05MAY03	TLA	DEV.	INI. ISS. PER 2078	
REMOVE ALL BURRS	REV	DATE	BY	DCN No.	REMARKS		
ENGLISH (INCHES) .XX ±.01 .XXX ±.020	METRIC (MM) .X ±.25 .XX ±.13	SCALE 5:1	APPLIC: CERAMIC COAXIAL FILTER				
ANGLES ± 0° 30'	DATE 05MAY03	TITLE: 3BCR2C-2287/100-L					
COMNAV ENGINEERING INC.	FINISH: BOARD: NI/AU PLATED COPPER JACKET: NI/SILVER RESONATOR: SILVER					DRAWING No. OL0466	SHEET OF 1 1