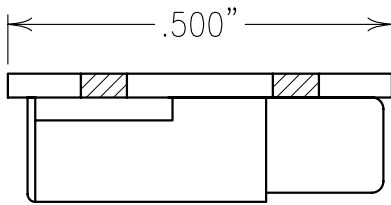


2

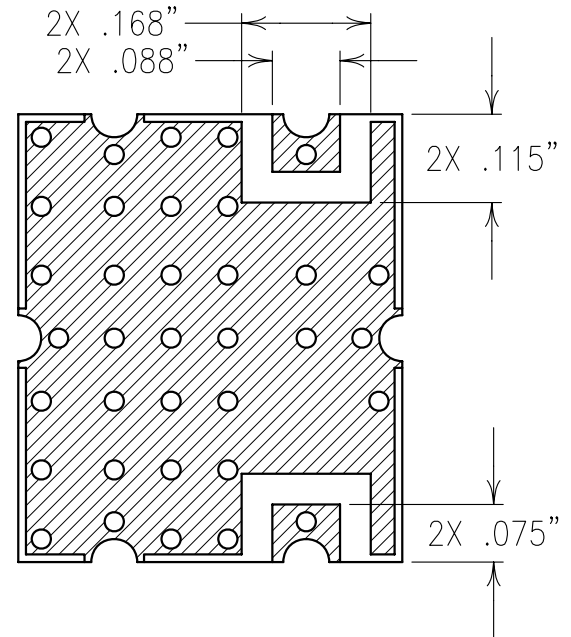
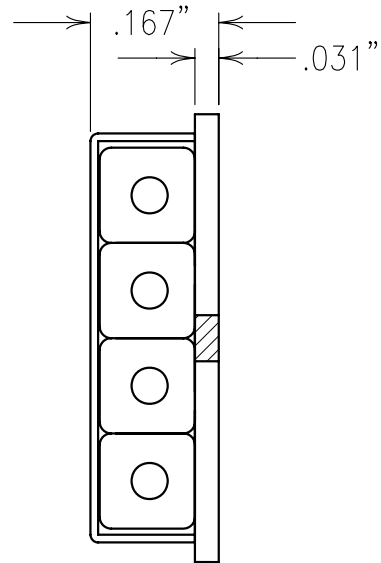
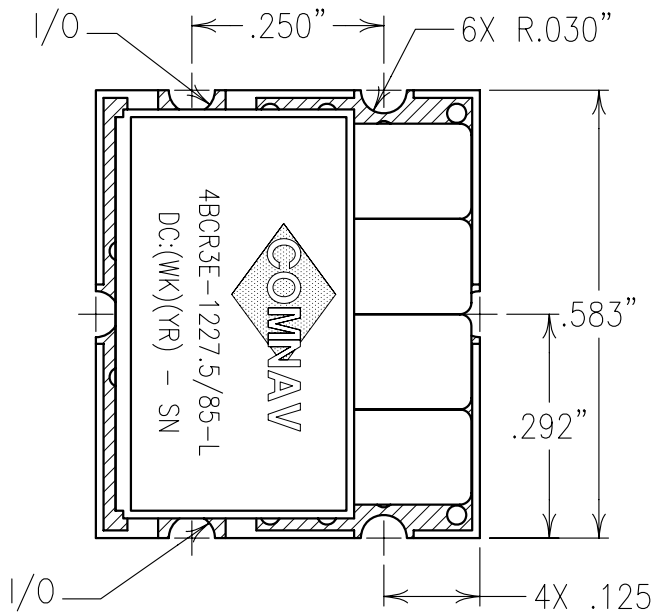


COPY

1

ELECTRICAL CHARACTERISTICS

CENTER FREQUENCY:	1220 MHz
3 dB BANDWIDTH:	85 MHz
LOSS @ fo:	<1.5 dB
VSWR:	<1.7:1 TYP
REJECTION:	TYPICAL 4 POLE



NOTES:
 FOR RECOMMENDED FOOTPRINT SEE FP0025.
 RECOMMENDED ATTACHMENT METHOD: SILVER EPOXY
 OR REFLOW NOT TO EXCEED AS INDICATED BELOW:
 TEMP.(°C) MAX.TIME(SEC)

215	90
230	60
245	30
260	15

Confidential and Proprietary information of ComNav Engineering Inc. Do Not Duplicate or Use Without Permission. ComNav Engineering Inc. claims Copyright in this document as of the Creation, last revision, and last updated dates. All Rights Reserved.					
ENGLISH / METRIC ENGLISH	CHECKED BY				
TOLERANCES UNLESS OTHERWISE SPECIFIED	DRAWN BY				
MACHINED SURFACES TO BE 125 / OR BETTER	PBF	II	07OCT02	MJG	DEV.
REMOVE ALL BURRS	ENGINEER	REV	DATE	BY	DCN No.
	MJG				REMARKS
ENGLISH (INCHES) .XX ±.01 .XXX ±.005	METRIC (MM) .X ±.25 .XX ±.13	SCALE 4:1	APPLIC: COAXIAL FILTER		
ANGLES ± 0° 30'	DATE 09OCT02	TITLE: 4BCR3E-1227.5/85-L			
	FINISH: BOARD: NI/AU PLATED COPPER	DRAWING No.		SHEET OF	
	JACKET: NI/SILVER	0L0432		1 1	
	RESONATOR: SILVER				