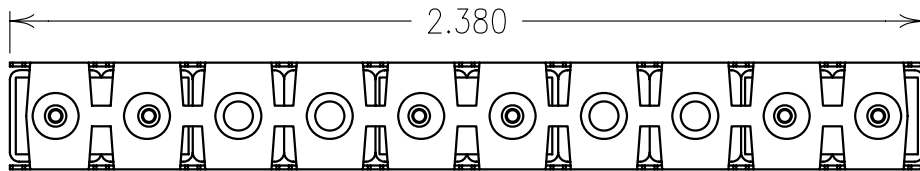
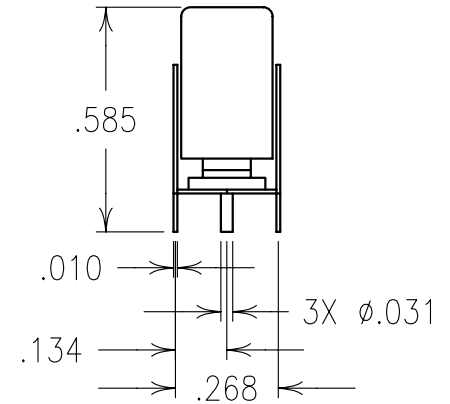
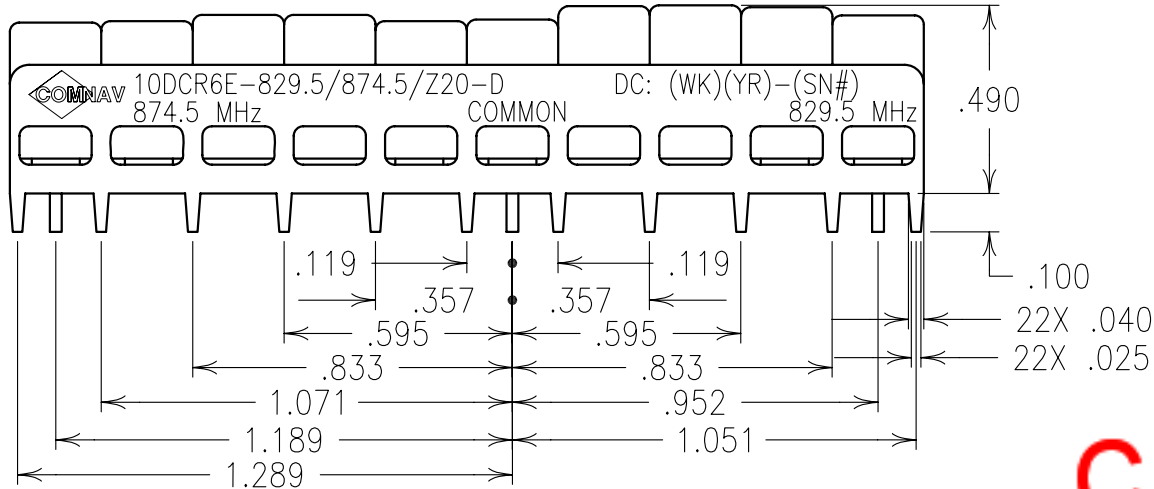


2

1

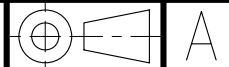


COPY

ELECTRICAL CHARACTERISTICS

CENTER FREQUENCY	829.5 MHz CHAN.	874.5 MHz CHAN.
PASSBAND:	824-835 MHz	869-880 MHz
PASSBAND LOSS:	<3.2 dB	<3.2 dB
PASSBAND VSWR:	<1.7:1	<1.7:1
60 dB REJECTION:	869-880 MHz	824-835 MHz
IN/OUT IMPEDANCE:	50 OHMS	50 OHMS

Confidential and Proprietary information of ComNav Engineering Inc. Do Not Duplicate or Use Without Permission. ComNav Engineering Inc. claims Copyright in this document as of the Creation, last revision, and last updated dates. All Rights Reserved.



NOTES:

HAND OR WAVE SOLDERING.

MAX REFLOW TEMP. 240°C FOR 30 SEC.,
OR 260°C FOR 15 SEC.

FOOTPRINT AVAILABLE UPON REQUEST.

ENGLISH / METRIC ENGLISH	CHECKED BY B	01OCT02	MJG	DEV.	GEN. REV. PER 1954
TOLERANCES UNLESS OTHERWISE SPECIFIED	DRAWN BY A	30SEP02	MJG	DEV.	GEN. REV. PER 1952
MACHINED SURFACES TO BE 125 / OR BETTER	ENGINEER II	27SEP02	MJG	DEV.	INI. ISS. PER 1950
REMOVE ALL BURRS	ENGINEER MJG	REV	DATE	BY	DCN No.
ENGLISH (INCHES)	METRIC (MM)	SCALE 2:1	APPLIC: AMPS A BAND DIPLEXER		
.XX ±.02 .XXX ±.010	.X ±.50 .XX ±.25	DATE 01OCT02	TITLE: 10DCR6E-829.5/874.5/Z20-D		
ANGLES ± 0° 30'	FINISH: BOARD: Sn63Pb37 PLATED COPPER JACKET: NI/SILVER RESONATOR: SILVER		DRAWING No. 0L0431		SHEET OF 1 1