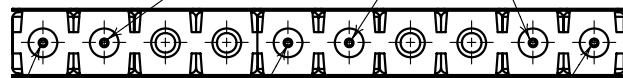


DETAIL A
SCALE 2:1

HIGH IMPEDANCE POINTS (NOTE 1)

SEE DETAIL A

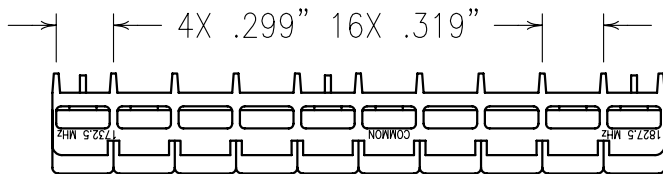
COPY



1732.5 MHz

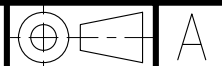
1827.5 MHz

COMMON POINT



ELECTRICAL CHARACTERISTICS		
CENTER FREQ.	1732.5 MHz	1827.5 MHz
3 dB PASSBAND	65 MHz NOM.	65 MHz NOM.
PASSBAND	1710-1755 MHz	1805-1850 MHz
PASSBAND LOSS	<1.5 dB	<1.5 dB
PASSBAND VSWR:	< 1.5:1	< 1.5:1
25 dBc REJECTION	1652.5 MHz	1907.5 MHz
50 dBc REJECTION	1805-1850 MHz	1710-1755 MHz

Confidential and Proprietary information of ComNav Engineering Inc. Do Not Duplicate or Use Without Permission. ComNav Engineering Inc. claims Copyright in this document as of the Creation, last revision, and last updated dates. All Rights Reserved.



NOTES:

NOTE 1 THERE MUST BE A MINIMUM OF .050 AIR BETWEEN GROUND AND HIGH IMPEDANCE POINTS. THIS MAY BE DONE BY RAISING THE FILTER OR BY DRILLING OUT THE BOARD. HAND OR WAVE SOLDERING.
MAX REFLOW TEMP. 240°C FOR 30 SEC., OR 260°C FOR 15 SEC.
FOOTPRINT AVAILABLE UPON REQUEST.

ENGLISH / METRIC ENGLISH	CHECKED BY				
TOLERANCES UNLESS OTHERWISE SPECIFIED	DRAWN BY				
MACHINED SURFACES TO BE 125 / OR BETTER	ENGINEER	II	19APR02	MJG	DEV.
REMOVE ALL BURRS	REV		DATE	BY	DCN No.
ENGLISH (INCHES)	SCALE	APPLIC: CERAMIC COAXIAL FILTER			
METRIC (MM)	DATE	TITLE: 10DCR8B-1732.5/1827.5/Z65-D			
.XX ±.02	ANGLES ± 0° 30'				
.XXX ±.010					
.XX ±.25					
		FINISH: BOARD: Sn63Pb37 JACKET: NI/SILVER RESONATOR: SILVER			DRAWING No. 010404
					SHEET OF 1 1