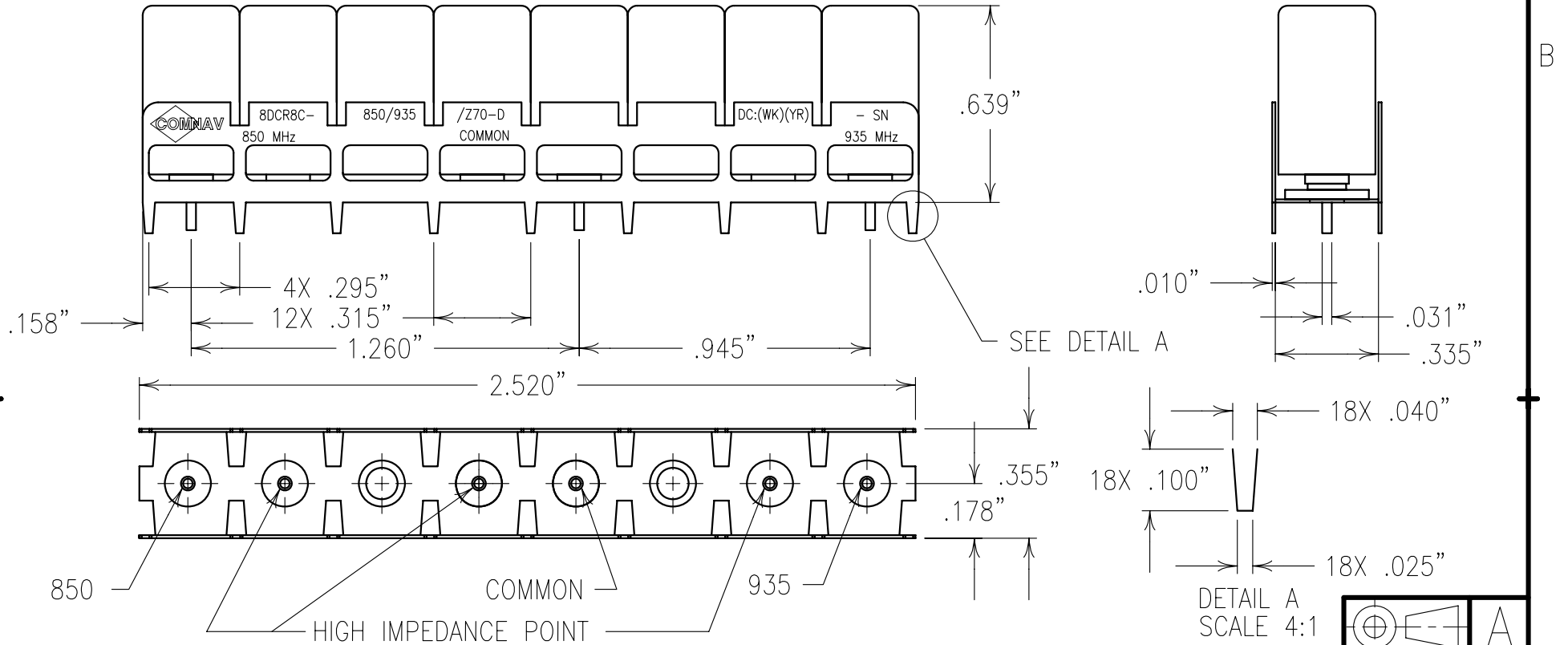


COPY

ELECTRICAL CHARACTERISTICS

| CHANNEL 1 | |
|-----------------|----------------------|
| PASSBAND | 820-880 MHz |
| PASSBAND LOSS | < 2.0 dB |
| PASSBAND VSWR | <1.7:1 TYP |
| 35 dB REJECTION | DC-735, 909-2400 MHz |
| S23 ISOLATION | >35 dB, DC-2400 MHz |

| CHANNEL2 | |
|-----------------|-----------------------|
| PASSBAND | 909-960 MHz |
| PASSBAND LOSS | < 2.0 dB |
| PASSBAND VSWR | <1.7:1 TYP |
| 35 dB REJECTION | DC-880, 1040-2400 MHz |
| S23 ISOLATION | >35 dB, DC-2400 MHz |



Confidential and Proprietary information of ComNav Engineering Inc. Do Not Duplicate or Use Without Permission. ComNav Engineering Inc. claims Copyright in this document as of the Creation, last revision, and last updated dates. All Rights Reserved.

NOTES:

- 1) DC: IS ON ONE SIDE ONLY.
- 2) THERE MUST BE A MINIMUM OF .050 AIR SPACE BETWEEN GROUND AND HIGH IMPEDANCE POINTS. THIS MAY BE ACCOMPLISHED BY RAISING THE FILTER OR DRILLING OUT THE BOARD. FOR RECOMMENDED FOOTPRINT SEE FP0033.

| | | | | | |
|--|--|--------------------------------|---------|-----|-----------------|
| ENGLISH / METRIC ENGLISH | CHECKED BY | | | | |
| TOLERANCES UNLESS OTHERWISE SPECIFIED MACHINED SURFACES TO BE 125 / OR BETTER REMOVE ALL BURRS | DRAWN BY RME | II | 29NOV01 | MJG | DEV. |
| ENGLISH (INCHES) .XX ±.02 .XXX ±.010 | ENGINEER MJG | REV | DATE | BY | DCN No. |
| METRIC (MM) .X ±.25 .XX ±.13 | SCALE 2:1 | APPLIC: CERAMIC COAXIAL FILTER | | | |
| ANGLES ± 0° 30' | DATE 13DEC01 | TITLE: 8DCR8C-850/935/Z70-D | | | |
| COMNAV ENGINEERING INC | FINISH: BOARD: TIN PLATED COPPER JACKET: NI/SILVER RESONATOR: SILVER | DRAWING No. 0L0379 | | | SHEET OF 1 1 |