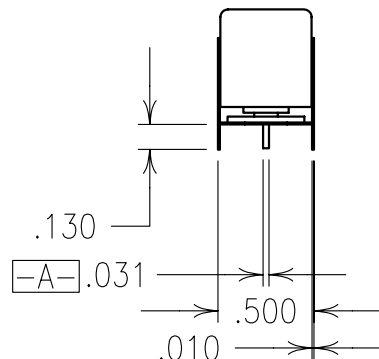
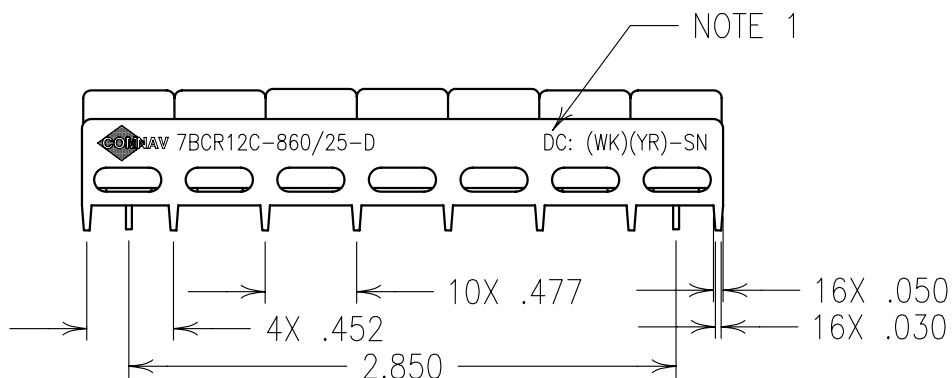


2

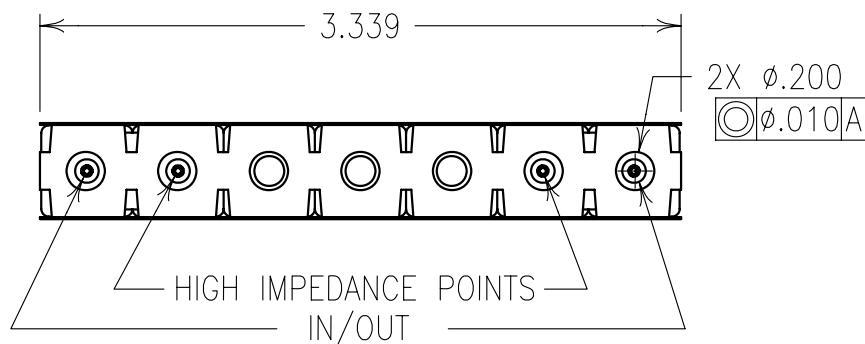
1



## ELECTRICAL SPECIFICATIONS

2.5 dB PASSBAND	851 - 869 Mhz
1.5:1 VSWR PASSBAND	851 - 869 Mhz
45 dB REJECTION	890 - 2580 Mhz
35 dB REJECTION	836 Mhz
60 dB REJECTION	DC - 824 Mhz

COPY

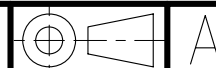


## NOTES:

- 1) DC: IS ON ONE SIDE ONLY.
- 2) THERE MUST BE A MINIMUM OF .050 AIR SPACE BETWEEN BOARD AND HIGH IMPEDANCE POINTS. THIS MAY BE ACCOMPLISHED BY RAISING THE FILTER OR DRILLING OUT THE BOARD.

FOR RECOMMENDED FOOTPRINT SEE FP0061.

Confidential and Proprietary information of ComNav Engineering Inc. Do Not Duplicate or Use Without Permission. ComNav Engineering Inc. claims Copyright in this document as of the Creation, last revision, and last updated dates. All Rights Reserved.



A

ENGLISH / METRIC ENGLISH		CHECKED BY					
TOLERANCES UNLESS OTHERWISE SPECIFIED  MACHINED SURFACES TO BE 125 / OR BETTER  REMOVE ALL BURRS		DRAWN BY RME					
		ENGINEER MJG		II	18SEP01	MJG	DEV.
		REV	DATE	BY	DCN No.	REMARKS	
ENGLISH (INCHES) .XX ±.02 .XXX ±.010		METRIC (MM) .X ±.25 .XX ±.13		SCALE 1:1		APPLIC: CERAMIC COAXIAL FILTER	
ANGLES ± 0° 30'		DATE 18SEP01		TITLE: 7BCR12C-860/25-D			
		FINISH: JACKET: NI/SILVER RESONATOR: SILVER PINS: TIN PLATED BRASS				DRAWING No. 0L0352	
						SHEET OF 1 1	

A