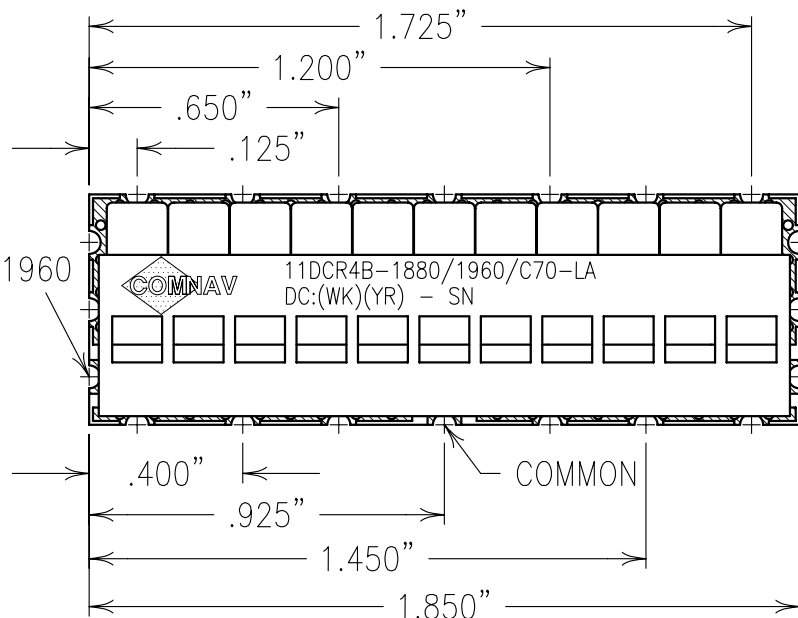
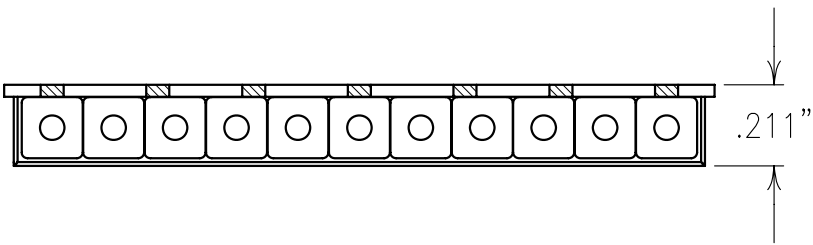


2

1

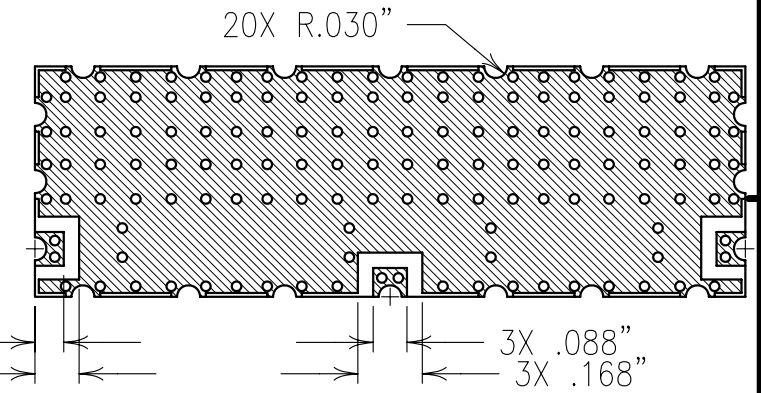
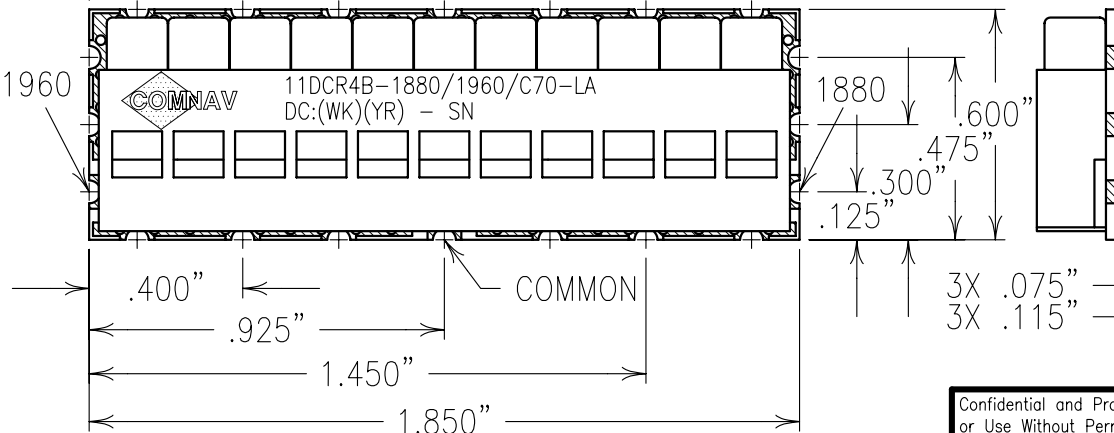


COPY

ELECTRICAL CHARACTERISTICS

	CHANNEL1	CHANNEL2
CENTER FREQUENCY(MHz)	1880	1960
PASSBAND(MHz)	1850-1960	1960-1990
PASSBAND LOSS(dB)	<4.0	<4.0
PASSBAND FLATNESS(dB)	<2.2	<2.2
PASSBAND VSWR	<1.7:1	<1.7:1
ATTENUATION		
DC-1800 MHz	>45 dBc	
1960-3000 MHz	>45 dBc	
DC-1910 MHz		>45 dBc
2075-3000 MHz		>45 dBc
OPERATING TEMP.	-40 TO +85°C	

B



NOTES:
 ALL DIVITS ARE GROUND UNLESS MARKED OTHERWISE (COMMON, 1880, 1960).
 FOR RECOMMENDED FOOTPRINT SEE FP0020.

Confidential and Proprietary information of ComNav Engineering Inc. Do Not Duplicate or Use Without Permission. ComNav Engineering Inc. claims Copyright in this document as of the Creation, last revision, and last updated dates. All Rights Reserved.

ENGLISH / METRIC ENGLISH	CHECKED BY						
TOLERANCES UNLESS OTHERWISE SPECIFIED MACHINED SURFACES TO BE 125 / OR BETTER REMOVE ALL BURRS	DRAWN BY RME						
	ENGINEER KJR	REV	DATE	BY	DCN No.	REMARKS	
ENGLISH (INCHES) .XX ±.02 .XXX ±.01	METRIC (MM) .X ±.25 .XX ±.13	SCALE 2:1	APPLIC: CERAMIC COAXIAL FILTER				
ANGLES ± 0° 30'	DATE 18JUN01	TITLE: 11DCR4B-1880/1960/C70-LA					

A

COMNAV ENGINEERING INC. FINISH: BOARD: NI/AU PLATED COPPER JACKET: NI/SILVER RESONATOR: SILVER

DRAWING No. 010336 SHEET OF 1 1