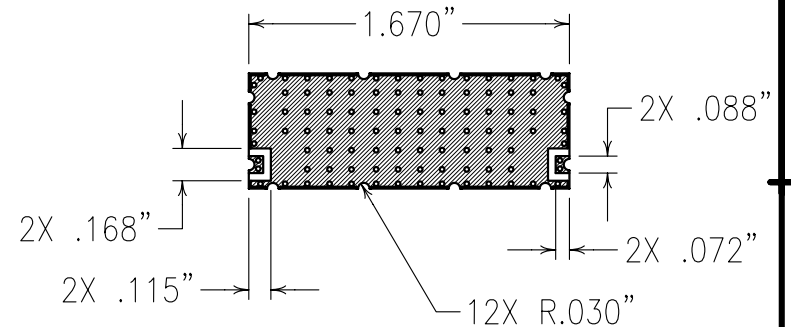
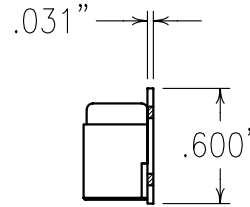
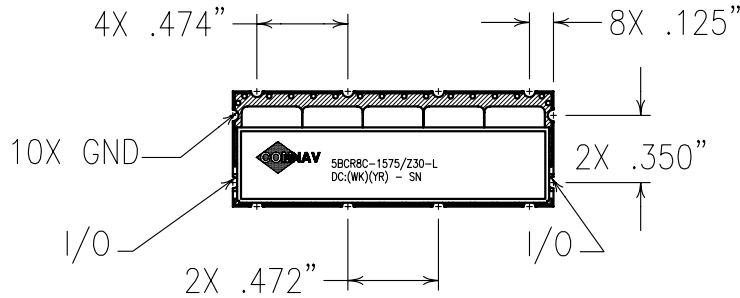


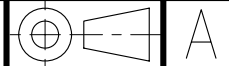
COPY

ELECTRICAL CHARACTERISTICS

CENTER FREQUENCY	1575 MHz
PASSBAND	1573.42 - 1577.42 MHz
PASSBAND LOSS	2.3 dB MAX.
PASSBAND VSWR	1.7:1
50 dBc REJECTION	1610 - 1661 MHz
TEMP. RANGE	-55 TO +80 DEG. C
SPURIOUS WAVEGUIDE MODES BEGIN OCCURRING AT APPROXIMATELY 3 GHz.	



Confidential and Proprietary information of ComNav Engineering Inc. Do Not Duplicate or Use Without Permission. ComNav Engineering Inc. claims Copyright in this document as of the Creation, last revision, and last updated dates. All Rights Reserved.



NOTES:

FOR RECOMMENDED FOOTPRINT SEE FP0048.
RECOMMENDED ATTACHMENT METHOD: SILVER EPOXY
OR REFLOW NOT TO EXCEED AS INDICATED BELOW:

TEMP.(°C)	MAX.TIME(SEC)
215	90
230	60
245	30
260	15

ENGLISH / METRIC ENGLISH		CHECKED BY					
TOLERANCES UNLESS OTHERWISE SPECIFIED MACHINED SURFACES TO BE 125 / OR BETTER REMOVE ALL BURRS		DRAWN BY RME					
ENGLISH (INCHES) .XX ±.02 .XXX ±.010		ENGINEER KJR		II	24MAY01	KJR	DEV.
METRIC (MM) .X ±.25 .XX ±.13		SCALE 1:1		REV	DATE	BY	DCN No.
ANGLES ± 0° 30'		DATE 24MAY01		APPLIC: CERAMIC COAXIAL FILTER			
FINISH: BOARD: NI/AU PLATED COPPER JACKET: NI/SILVER RESONATORS: NI/SILVER		TITLE: 5BCR8C-1575/Z30-LA				REMARKS INI. ISS. PER 1632	
DRAWING No. 0L0330		SHEET NO/OF 1 / 1					

