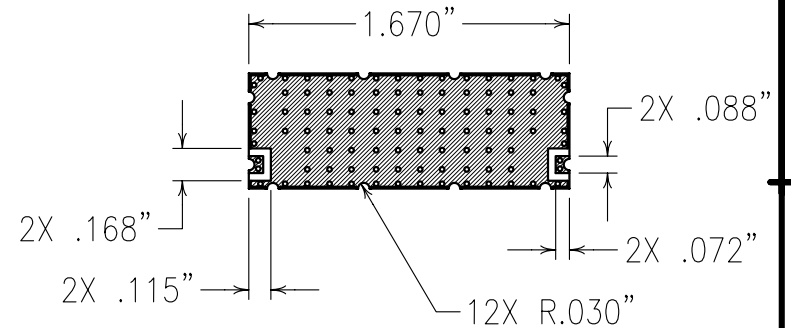
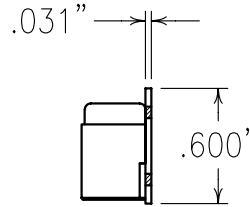
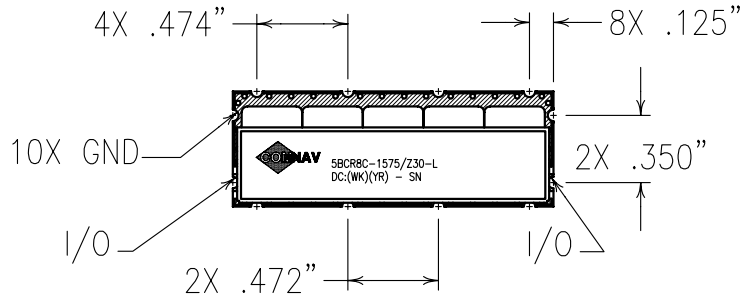


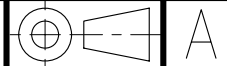
**COPY**

**ELECTRICAL CHARACTERISTICS**

CENTER FREQUENCY	1575 MHz
PASSBAND	1573.42 - 1577.42 MHz
PASSBAND LOSS	2.3 dB MAX.
PASSBAND VSWR	1.7:1
50 dBc REJECTION	1610 - 1661 MHz
TEMP. RANGE	-55 TO +80 DEG. C
SPURIOUS WAVEGUIDE MODES BEGIN OCCURRING AT APPROXIMATELY 3 GHz.	



Confidential and Proprietary information of ComNav Engineering Inc. Do Not Duplicate or Use Without Permission. ComNav Engineering Inc. claims Copyright in this document as of the Creation, last revision, and last updated dates. All Rights Reserved.



**NOTES:**

FOR RECOMMENDED FOOTPRINT SEE FP0042.  
RECOMMENDED ATTACHMENT METHOD: SILVER EPOXY OR REFLOW NOT TO EXCEED AS INDICATED BELOW:

TEMP.(°C)	MAX.TIME(SEC)
215	90
230	60
245	30
260	15

ENGLISH / METRIC ENGLISH		CHECKED BY					
TOLERANCES UNLESS OTHERWISE SPECIFIED MACHINED SURFACES TO BE 125 / OR BETTER REMOVE ALL BURRS		DRAWN BY	A	24MAY01	KJR	DEV.	GEN. REV. PER 1630
ENGLISH (INCHES) .XX ±.02 .XXX ±.010		ENGINEER	II	09MAR01	PSE	DEV.	INI. ISS. PER 1562
METRIC (MM) .X ±.25 .XX ±.13		REV		DATE	BY	DCN No.	REMARKS
ANGLES ± 0° 30'		SCALE	1:1				
FINISH:		APPLIC:	CERAMIC COAXIAL FILTER				
BOARD: NI/AU PLATED COPPER JACKET: NI/SILVER RESONATORS: NI/SILVER		DATE	24MAY01		TITLE:	5BCR8C-1575/Z30-L	
DRAWING No.		0L0312		SHEET NO/OF		1 / 1	

