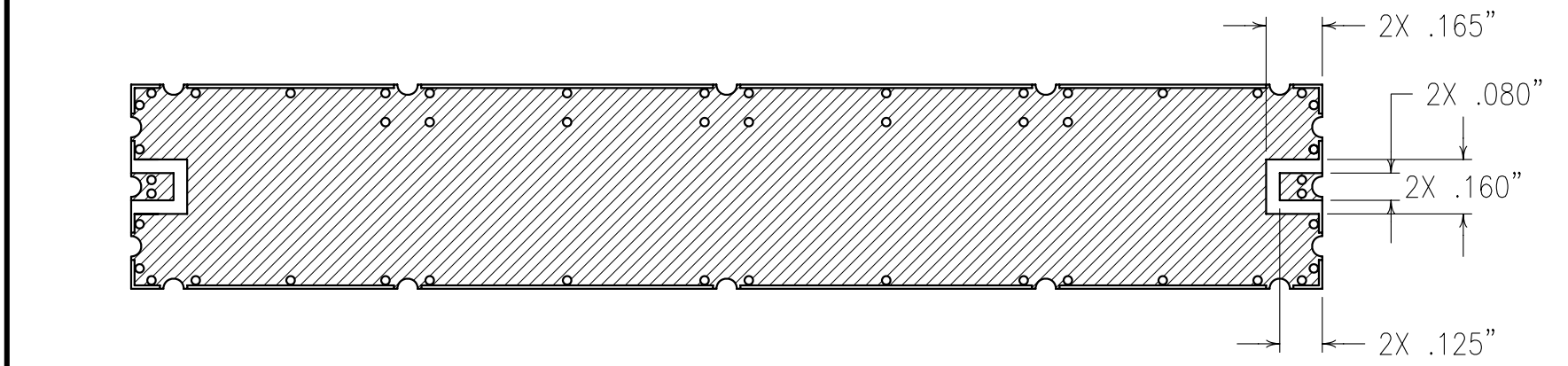
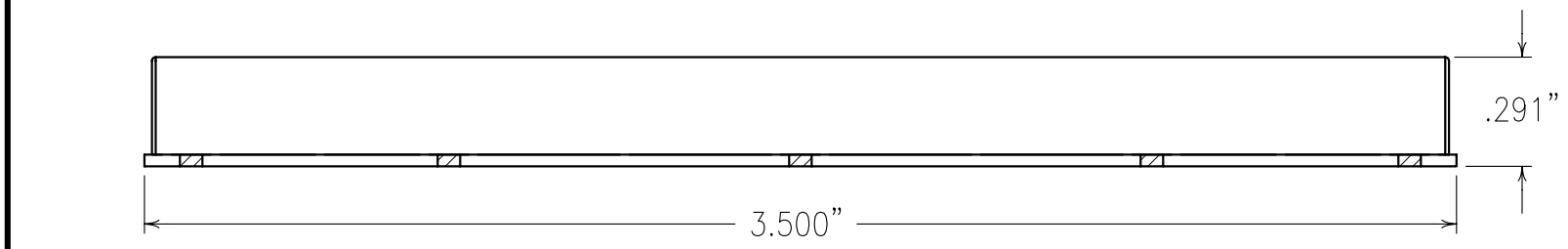
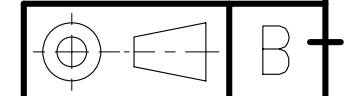


ELECTRICAL CHARACTERISTICS	
CENTER FREQUENCY	140 MHz
3.0 dB BANDWIDTH	75 MHz NOM
PASSBAND	112-168 MHz
PASSBAND LOSS	< 3.0 dB
PASSBAND FLATNESS	0.5 dB
PASSBAND DELAY VAR.	< 6.0 NSEC.
PASSBAND VSWR	1.7:1 MAX (1.5:1 GOAL)
REJECTION:	
20 dB	185 MHz
40 dB	75 MHz
60 dB	205 MHz



COPY

NI/AU



NOTES:

FOR RECOMMENDED FOOTPRINT SEE FP0035.
 RECOMMENDED ATTACHMENT METHOD: SILVER EPOXY
 OR REFLOW NOT TO EXCEED AS INDICATED BELOW:

TEMP.(°C)	MAX.TIME(SEC)
215	90
230	60
245	30
260	15

ENGLISH / METRIC		CHECKED BY							
ENGLISH		DRAWN BY							
TOLERANCES UNLESS OTHERWISE SPECIFIED		RME							
MACHINED SURFACES TO BE 125 / OR BETTER		ENGINEER		II	22FEB01	KJR	DEV.	INI. ISS. PER 1543	
REMOVE ALL BURRS		KJR		REV	DATE	BY	DCN No.	REMARKS	
ENGLISH (INCHES)	METRIC (MM)	SCALE		APPLIC: CHIP & WIRE FILTER					
.XX ±.02	.X ±.25	2:1		DATE		TITLE:		SHEET NO./OF	
.XXX ±.01	.XX ±.13	02MAR01		02MAR01		9BLC1-140/ZEQ75-L		1 1	
ANGLES ± 0° 30'		MATERIAL: N/A			DRAWING NO. 0L0309				
		FINISH: N/A							

Confidential and Proprietary information of ComNav Engineering Inc. Do Not Duplicate or Use Without Permission. ComNav Engineering Inc. claims Copyright in this document as of the Creation, last revision, and last updated dates. All Rights Reserved.

