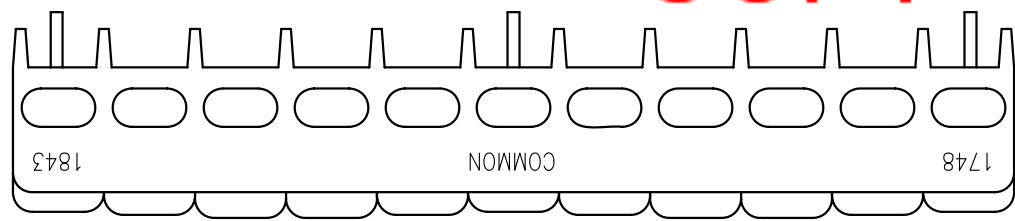
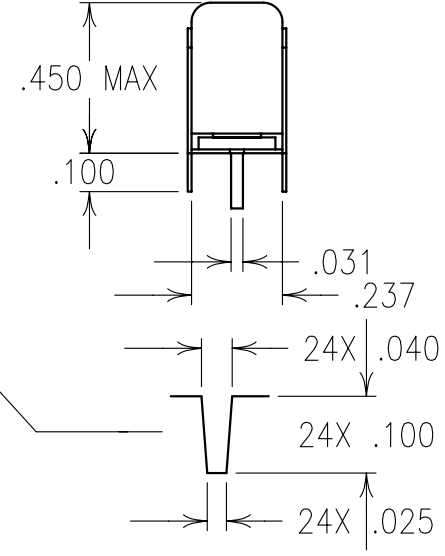
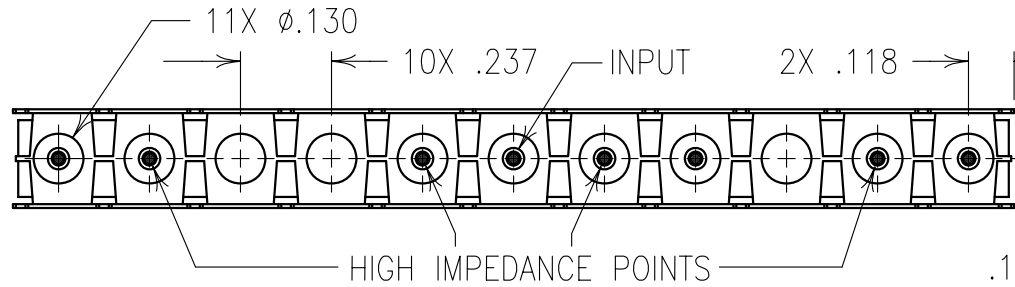
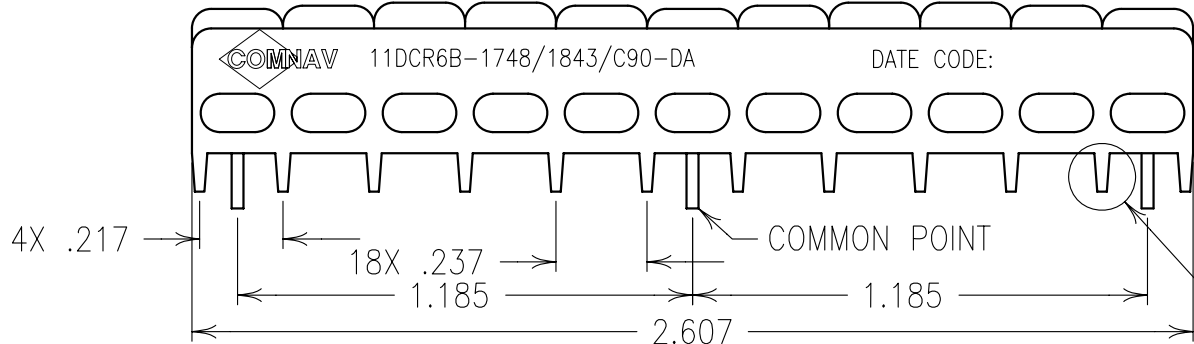


2

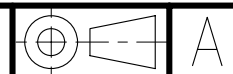
1



COPY

ELECTRICAL SPECIFICATIONS		
	TX	RX
SPECIFICATIONS	1748/90	1843/90
CENTER FREQUENCY(MHz)	1748 NOM	1843 NOM
3dB BANDWIDTH(MHz)	90 NOM	90 NOM
PASSBAND(MHz)	1710-1785	1805-1880
MAX INSERTION LOSS	3 dB	3 dB
ISOLATION	40 dB	40 dB
PASSBAND RIPPLE	≤ 0.5	0.5
VSWR	≤ 1.7:1	≤ 1.7:1
IMPEDANCE(OHMS)	50	50

Confidential and Proprietary information of ComNav Engineering Inc. Do Not Duplicate or Use Without Permission. ComNav Engineering Inc. claims Copyright in this document as of the Creation, last revision, and last updated dates. All Rights Reserved.



NOTES:
 1) DC: IS ON ONE SIDE ONLY.
 2) THERE MUST BE A MINIMUM OF .050 AIR SPACE BETWEEN GROUND AND HIGH IMPEDANCE POINTS.
 THIS MAY BE ACCOMPLISHED BY RAISING THE FILTER OR DRILLING OUT THE BOARD.
 IT IS RECOMMENDED THAT VIA HOLES ARE USED FOR IN/OUT AND COMMON PIN CONNECTIONS TO BOARD.

ENGLISH / METRIC ENGLISH	CHECKED BY				
TOLERANCES UNLESS OTHERWISE SPECIFIED MACHINED SURFACES TO BE 125 OR BETTER REMOVE ALL BURRS	DRAWN BY PBF	II	19MAY00	KJR	DEV.
ENGLISH (INCHES) .XX ±.01 .XXX ±.005	ENGINEER KJR	REV	DATE	BY	DCN No.
METRIC (MM) .X ±.25 .XX ±.13	SCALE 2:1	APPLIC: COAXIAL FILTER			
ANGLES ± 0° 30'	DATE 19JUN00	TITLE: 11DCR6B-1748/1843/C90-DA			SHEET NO/OF 1 / 1
COMNAV ENGINEERING INC.	MATERIAL: N/A	DRAWING No. 0L0239			
	FINISH: N/A				