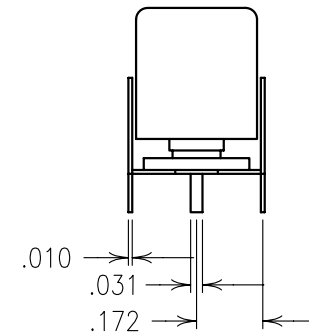
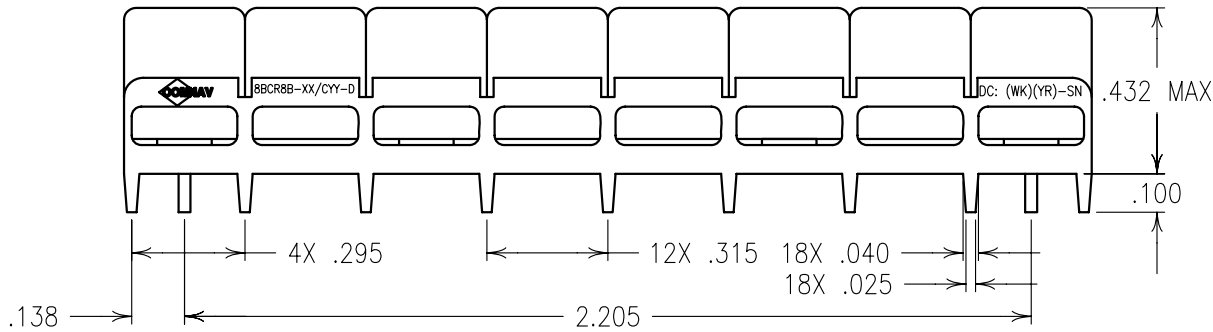
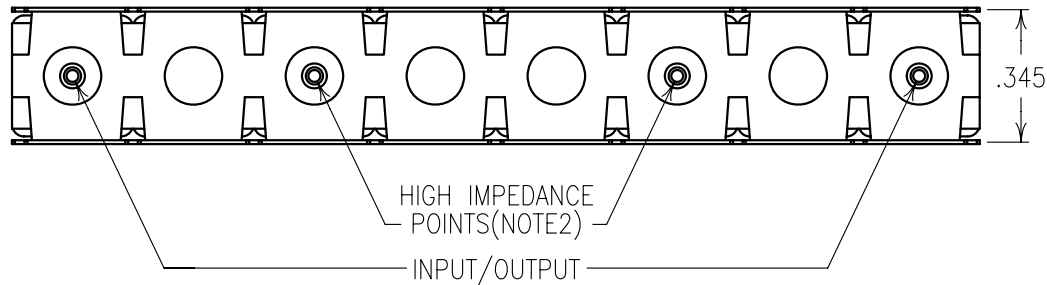


2

1

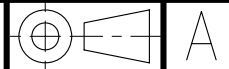


**COPY**



ELECTRICAL SPECIFICATIONS	
CENTER FREQUENCY(XX)	1748, 1843 MHz
3 dB BANDWIDTH(YY)	80 MHz NOM
PASSBAND	1710-1785, 1805-1880 MHz
INSERTION LOSS @ fo	<1.5 dB
PASSBAND FLATNESS	<2.0 dB
VSWR	1.7:1 TYP
ISOLATION IN OPPOSITE PASSBAND	>50 dB
CENTER FREQUENCY(XX)	1880, 1960 MHz
3 dB BANDWIDTH(YY)	70 MHz NOM
PASSBAND	1850-1910, 1930-1990 MHz
INSERTION LOSS @ fo	<2.0 dB
PASSBAND FLATNESS	<1.5 dB
VSWR	1.7:1 TYP
ISOLATION IN OPPOSITE PASSBAND	>50 dB

Confidential and Proprietary information of ComNav Engineering Inc. Do Not Duplicate or Use Without Permission. ComNav Engineering Inc. claims Copyright in this document as of the Creation, last revision, and last updated dates. All Rights Reserved.



NOTES:

- 1) DC: IS ON ONE SIDE ONLY.
- 2) THERE MUST BE A MINIMUM OF .050 AIR SPACE BETWEEN GROUND AND HIGH IMPEDANCE POINTS. THIS MAY BE ACCOMPLISHED BY RAISING THE FILTER OR DRILLING OUT THE BOARD.

RECOMMENDED FOOTPRINT CAN BE PROVIDED UPON REQUEST (FP0006).

ENGLISH / METRIC	ENGLISH	CHECKED BY						
TOLERANCES UNLESS OTHERWISE SPECIFIED	MACHINED SURFACES TO BE 125 OR BETTER	REMOVE ALL BURRS	DRAWN BY	A	11SEP01	MJG	DEV.	GEN. REV. PER 1724
			ENGINEER	II	24MAR00	MJG	DEV.	INI. ISS. PER 1148
			REV	DATE	BY	DCN No.	REMARKS	
ENGLISH (INCHES)	METRIC (MM)	SCALE	APPLIC: CERAMIC COAXIAL FILTER					
.XX ±.01	.X ±.25	2:1	TITLE: 8BCR8B-XX/CYY-D					
.XXX ±.005	.XX ±.13	DATE	DRAWING No. 010229					
ANGLES ± 0° 30'		11SEP01	FINISH: JACKET: NI/SILVER RESONATOR: SILVER PINS: TIN PLATED BRASS			SHEET OF 1 1		