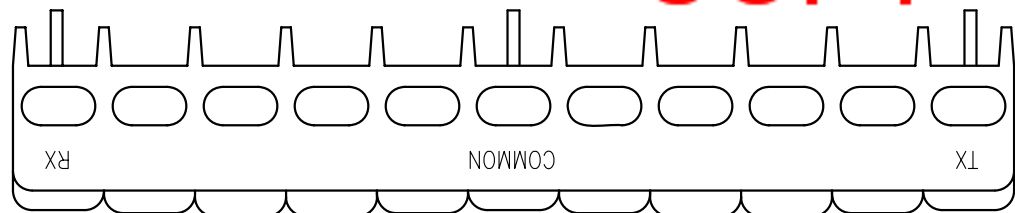
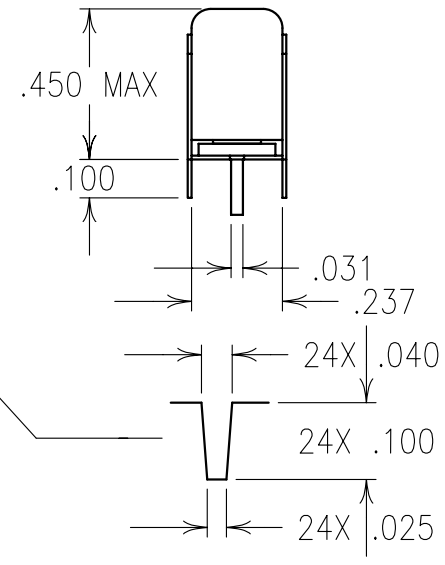
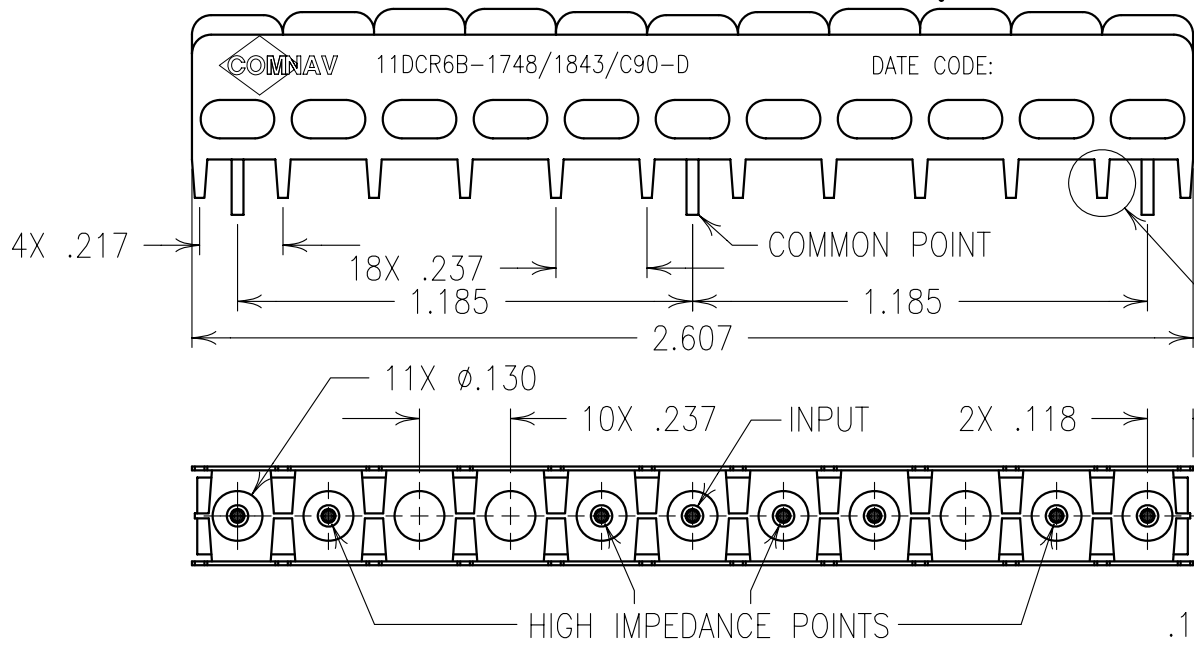


2

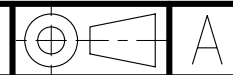
1



COPY

ELECTRICAL SPECIFICATIONS		
	RX	TX
SPECIFICATIONS	1748/90	1843/90
CENTER FREQUENCY(MHz)	1748 NOM	1843 NOM
3dB BANDWIDTH(MHz)	90 NOM	90 NOM
PASSBAND(MHz)	1710-1785	1805-1880
MAX INSERTION LOSS	3 dB	3 dB
ISOLATION	40 dB	40 dB
PASSBAND RIPPLE	≤ 0.5	0.5
VSWR	≤ 1.7:1	≤ 1.7:1
IMPEDANCE(OHMS)	50	50

Confidential and Proprietary information of ComNav Engineering Inc. Do Not Duplicate or Use Without Permission. ComNav Engineering Inc. claims Copyright in this document as of the Creation, last revision, and last updated dates. All Rights Reserved.



NOTES:
 1) DC: IS ON ONE SIDE ONLY.
 2) THERE MUST BE A MINIMUM OF .050 AIR SPACE BETWEEN GROUND AND HIGH IMPEDANCE POINTS. THIS MAY BE ACCOMPLISHED BY RAISING THE FILTER OR DRILLING OUT THE BOARD.
 IT IS RECOMMENDED THAT VIA HOLES ARE USED FOR IN/OUT AND COMMON PIN CONNECTIONS TO BOARD.

ENGLISH / METRIC ENGLISH	CHECKED BY					
TOLERANCES UNLESS OTHERWISE SPECIFIED MACHINED SURFACES TO BE 125/ OR BETTER REMOVE ALL BURRS	DRAWN BY RME	A	19MAY00	KJR	DEV.	GEN. REV. PER 1175
ENGLISH (INCHES) .XX ±.01 .XXX ±.005	ENGINEER KJR	II	31JAN00	MJG	DEV.	INI. ISS. PER 1136
METRIC (MM) .X ±.25 .XX ±.13	SCALE 2:1	REV	DATE	BY	DCN No.	REMARKS
ANGLES ± 0° 30'	DATE 27JUN00	APPLIC: COAXIAL FILTER				
	MATERIAL: N/A	TITLE: 11DCR6B-1748/1843/C90-D				SHEET NO/OF 1 1
	FINISH: N/A	DRAWING No. 0L0226				

