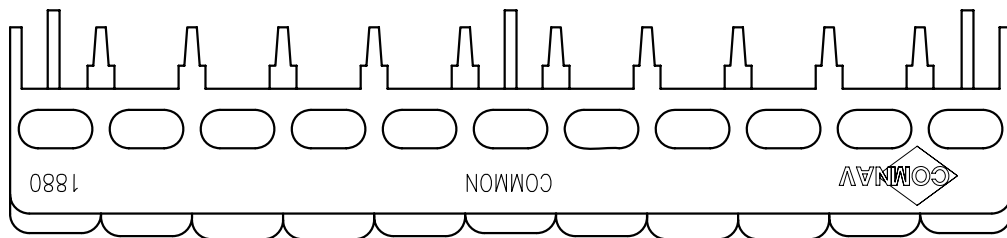
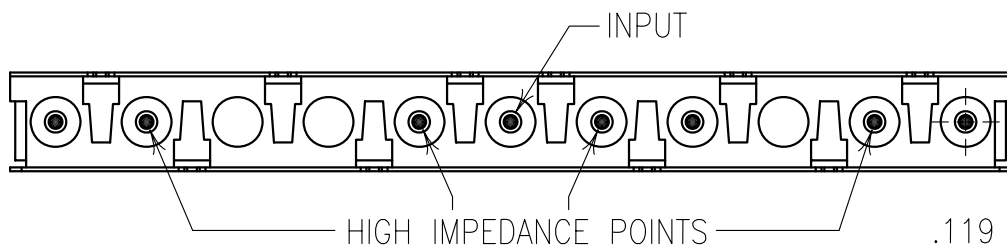
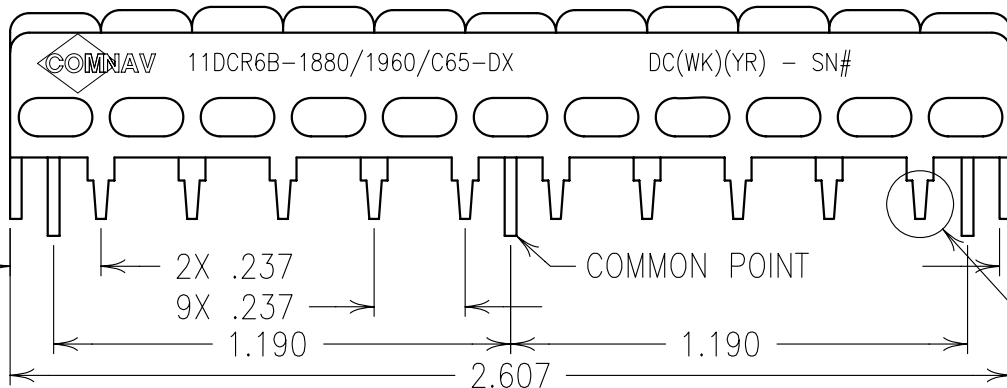
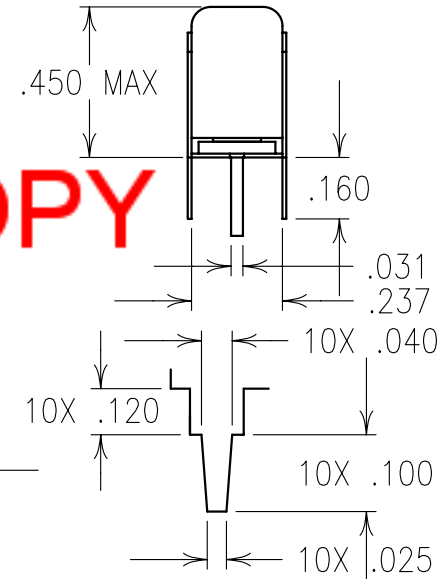


2

1

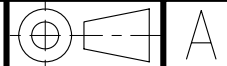


**COPY**



ELECTRICAL SPECIFICATIONS		
	RX	TX
SPECIFICATIONS	1880/65	1960/65
CENTER FREQUENCY(MHz)	1880 NOM	1960 NOM
3dB BANDWIDTH(MHz)	65 NOM	65 NOM
PASSBAND(MHz)	1850-1910	1930-1990
MAX PASSBAND LOSS	3.5 dB	3.5 dB
45 dBA REJECTION	1930-1990	1850-1910
PASSBAND FLATNESS	2.0 dB	2.0 dB
VSWR	≤1.7:1	≤1.7:1
IMPEDANCE(OHMS)	50	50

Confidential and Proprietary information of ComNav Engineering Inc. Do Not Duplicate or Use Without Permission. ComNav Engineering Inc. claims Copyright in this document as of the Creation, last revision, and last updated dates. All Rights Reserved.



NOTES:  
 1) DC: IS ON ONE SIDE ONLY.  
 2) THERE MUST BE A MINIMUM OF .050 AIR SPACE BETWEEN GROUND AND HIGH IMPEDANCE POINTS. THIS MAY BE ACCOMPLISHED BY RAISING THE FILTER OR DRILLING OUT THE BOARD.  
 IT IS RECOMMENDED THAT VIA HOLES ARE USED FOR IN/OUT AND COMMON PIN CONNECTIONS TO BOARD.

ENGLISH / METRIC ENGLISH	CHECKED BY					
TOLERANCES UNLESS OTHERWISE SPECIFIED MACHINED SURFACES TO BE 125 OR BETTER REMOVE ALL BURRS	DRAWN BY RME	A	30JUN00	KJR	DEV.	GEN. REV. PER 1207
ENGLISH (INCHES) .XX ±.01 .XXX ±.005	ENGINEER KJR	II	20DEC99	SWB	DEV.	INI. ISS. PER 1125
METRIC (MM) .X ±.25 .XX ±.13	SCALE 2:1	REV	DATE	BY	DCN No.	REMARKS
ANGLES ± 0° 30'	DATE 08JUL00	APPLIC: COAXIAL FILTER				TITLE: 11DCR6B-1880/1960/C65-DX
COMNAV ENGINEERING INC.	MATERIAL: N/A	DRAWING No. 0L0219				SHEET NO/OF 1 1
	FINISH: N/A					