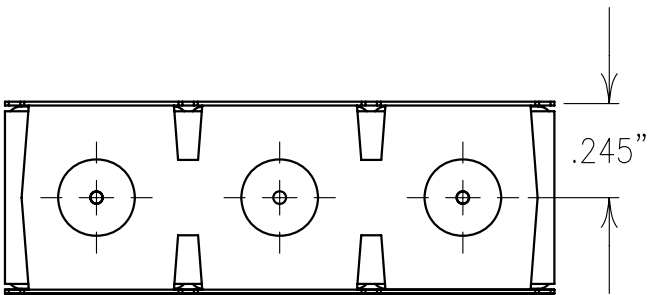


ELECTRICAL SPECIFICATIONS

| | |
|------------------|--------------|
| CENTER FREQUENCY | 892.5 MHz |
| 3 dB BANDWIDTH | 4.2 MHz NOM |
| PASSBAND | 3.0 MHz MIN |
| PASSBAND LOSS | ≤8.0 dB MAX |
| 30 dB REJECTION | ±12 MHz |
| 60 dB REJECTION | ±28 MHz |
| VSWR | ≤1.5:1 |
| OPERATING TEMP. | -40 TO +85°C |
| IMPEDANCE | 50 OHMS |



COPY

NOTES:
1) DC: IS ON ONE SIDE ONLY.
FOR RECOMMENDED FOOTPRINT SEE FP0021.

Confidential and Proprietary information of ComNav Engineering Inc. Do Not Duplicate or Use Without Permission. ComNav Engineering Inc. claims Copyright in this document as of the Creation, last revision, and last updated dates. All Rights Reserved.

| | | | | | | | |
|--|---------------------|--|--------------------------------|-----|------|--------------------|--|
| ENGLISH / METRIC ENGLISH | CHECKED BY | | | | | | |
| TOLERANCES UNLESS OTHERWISE SPECIFIED | DRAWN BY | A | 09JUL01 | SWB | DEV. | GEN. REV. PER 1716 | |
| MACHINED SURFACES TO BE 125 / OR BETTER REMOVE ALL BURRS | ENGINEER | II | 02OCT99 | SWB | DEV. | INT. ISS. PER 1100 | |
| ENGLISH (INCHES) | METRIC (MM) | SCALE | APPLIC: CERAMIC COAXIAL FILTER | | | | |
| .XX ±.02 .XXX ±.010 | .X ±.25 .XX ±.13 | 2:1 | TITLE: 3BCR12C-892.5/4.2-D | | | | |
| ANGLES ± 0° 30' | DATE | 31AUG01 | DRAWING No. 010216 | | | | |
| COMNAV ENGINEERING INC. | FINISH: | JACKET: NI/SILVER RESONATOR: SILVER PINS: TIN PLATED BRASS | | | | SHEET OF 1 1 | |