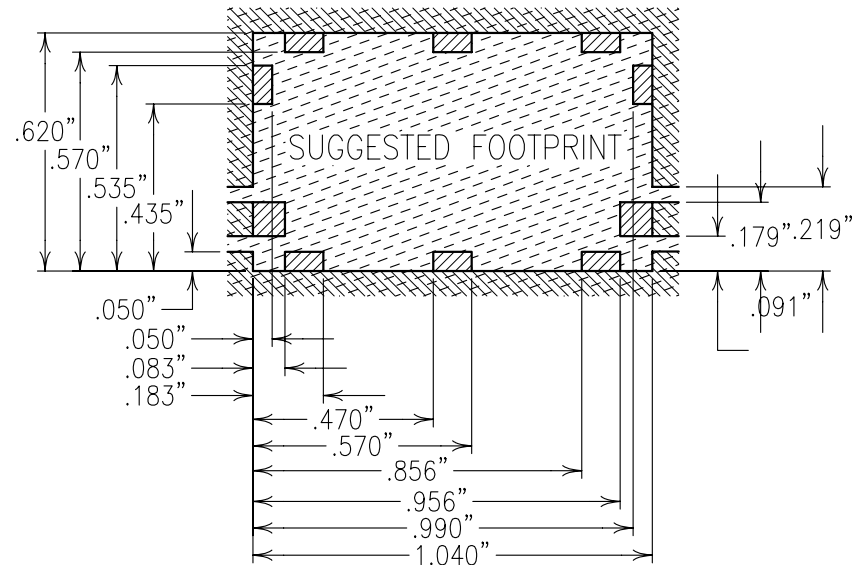
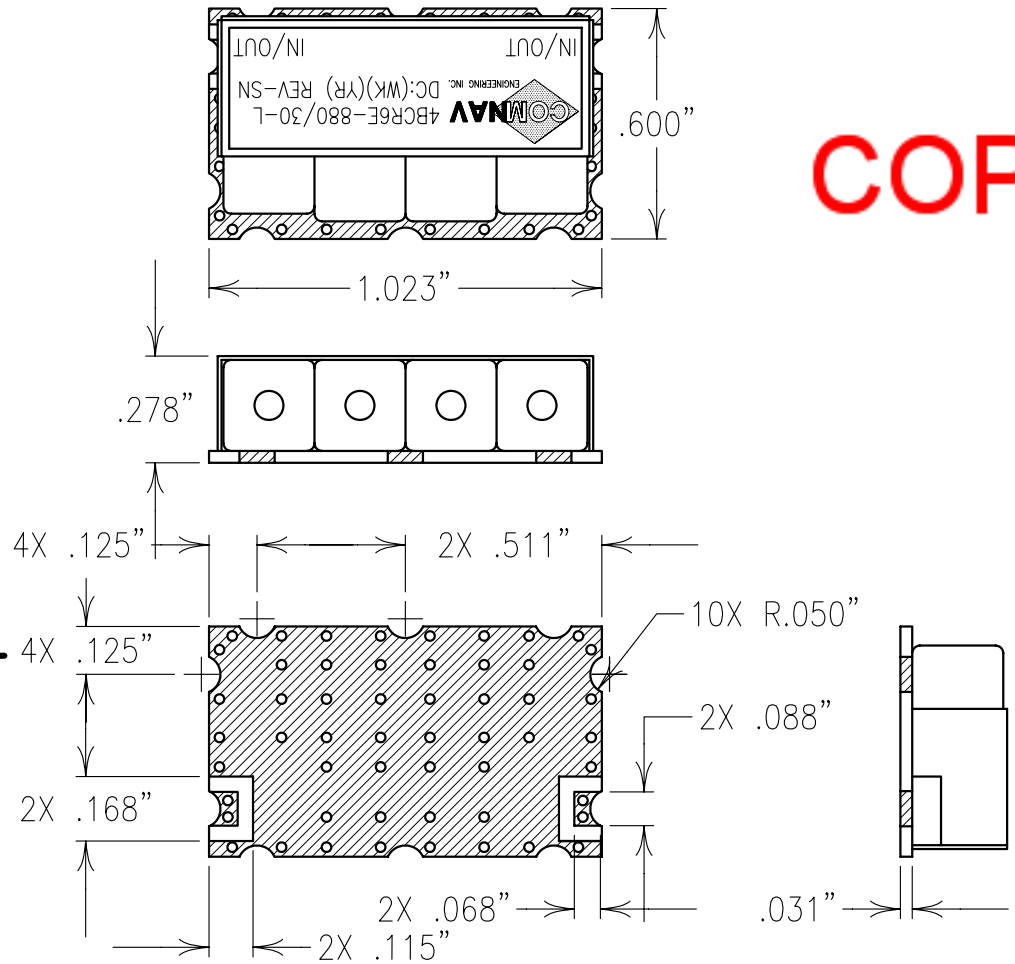


COPY

ELECTRICAL CHARACTERISTICS	
CENTER FREQUENCY	880 MHz
LOSS AT Fo	≤2.0 dB
3.0 dB BANDWIDTH	30 MHz NOM
1.0 dB BANDWIDTH	20 MHz NOM
PASSBAND VSWR	<1.5:1 TYP
REJECTION:	
30 dB BANDWIDTH	≤75 MHz WIDE
40 dB BANDWIDTH	≤100 MHz WIDE
POWER	5 WATTS



Confidential and Proprietary information of ComNav Engineering Inc. Do Not Duplicate or Use Without Permission. ComNav Engineering Inc. claims Copyright in this document as of the Creation, last revision, and last updated dates. All Rights Reserved.

NOTES:
 NO TIN PLATING UNDER SOLDER MASK.
 RECOMMENDED ATTACHMENT METHOD: SILVER EPOXY OR REFLOW NOT TO EXCEED AS INDICATED BELOW:

TEMP.(°C)	MAX.TIME(SEC)	
215	90	COPPER-NO TIN PLATING
230	60	TIN PLATED COPPER
245	30	
260	15	SOLDER MASK

ENGLISH / METRIC ENGLISH		CHECKED BY					
TOLERANCES UNLESS OTHERWISE SPECIFIED		DRAWN BY					
MACHINED SURFACES TO BE 125 OR BETTER		PBF					
REMOVE ALL BURRS		ENGINEER		II		02OCT99	
ENGLISH (INCHES)		SWB		SWB		DEV.	
METRIC (MM)		DATE		BY		DCN No.	
.XX ±.02		08OCT99				INIT. ISS. PER 1099	
.XXX ±.01						REMARKS	
ANGLES ± 0° 30'		SCALE		APPLIC:		COAXIAL FILTER	
		2:1		TITLE:		4BCR6E-880/30-L	
		MATERIAL: N/A		DRAWING No.		SHEET NO/OF	
		FINISH: N/A		0L0212		1 1	