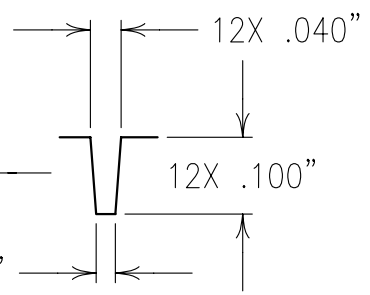
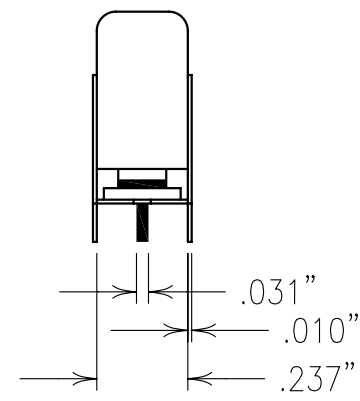
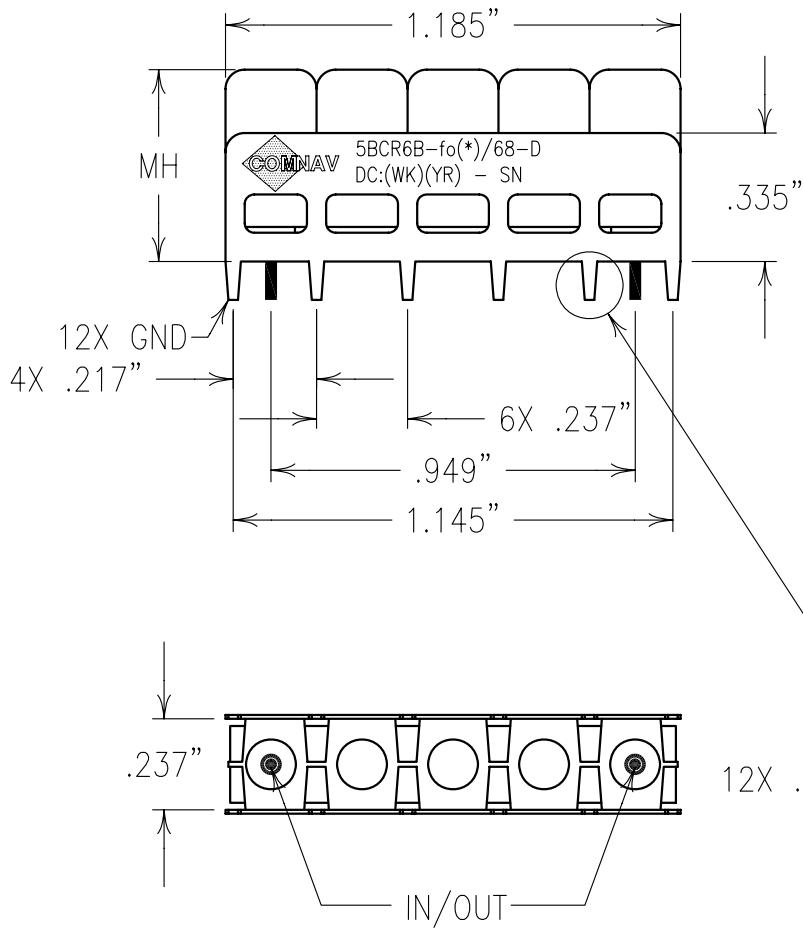


ELECTRICAL CHARACTERISTICS

CENTER FREQ. (fo(X))	MAX. HEIGHT (MH)
1719.9 MHz	0.475"
1779.4 MHz	0.465"
1839.0 MHz	0.450"
1898.6 MHz	0.435"
1958.1 MHz	0.420"
3 dB BANDWIDTH	67.8 MHz ±5%
LOSS @ fo:	<2.0 dB
25 dB ATTENUATION:	fo±60 MHz
VSWR	1.7:1 TYP.



COPY

NOTES:
 FOR RECOMMENDED FOOTPRINT SEE FP0040.
 MAX REFLOW TEMP. 240°C FOR 30 SEC.,
 OR 260°C FOR 15 SEC.
 HAND OR WAVE SOLDERING RECOMMENDED.

Confidential and Proprietary information of ComNav Engineering Inc. Do Not Duplicate or Use Without Permission. ComNav Engineering Inc. claims Copyright in this document as of the Creation, last revision, and last updated dates. All Rights Reserved.

ENGLISH / METRIC ENGLISH		CHECKED BY							
TOLERANCES UNLESS OTHERWISE SPECIFIED		DRAWN BY		A	19JUN01	SWB	DEV.	GEN. REV. PER 1653	
MACHINED SURFACES TO BE 125 / OR BETTER REMOVE ALL BURRS		ENGINEER		II	16JUN99	SWB	DEV.	INI. ISS. PER 1034	
		ENGINEER		REV	DATE	BY	DCN No.	REMARKS	
ENGLISH (INCHES)	METRIC (MM)	SCALE		APPLIC: CERAMIC COAXIAL FILTER					
.XX ±.02	.X ±.25	2:1		DATE		TITLE: 5BCR6B-fo(*)/68-D			
.XXX ±.010	.XX ±.13	24AUG01		DRAWING No.		0L0200		SHEET OF 1 1	
ANGLES ± 0° 30'		FINISH: JACKET: NI/SILVER RESONATOR: SILVER PINS: TIN PLATED BRASS							