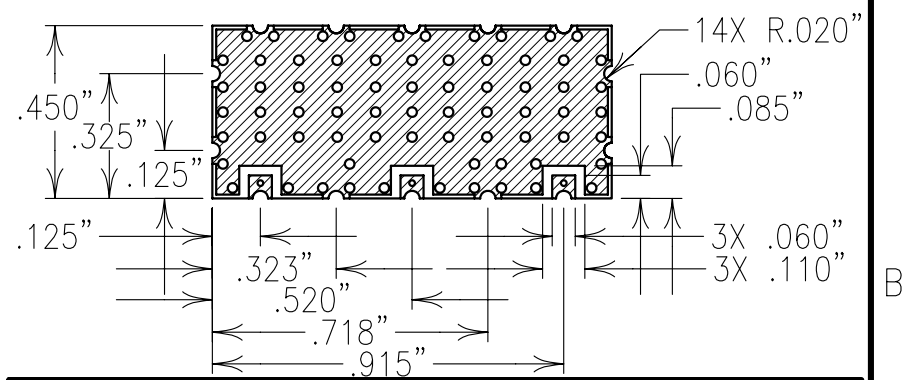
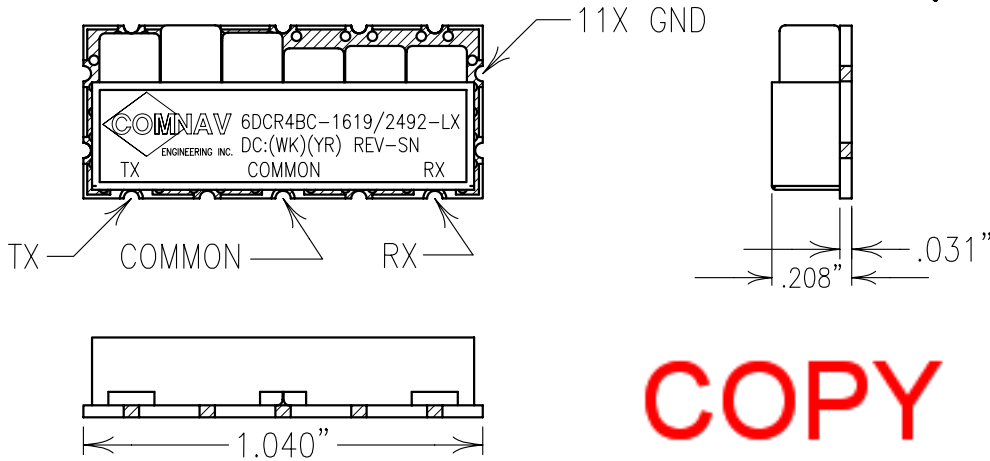
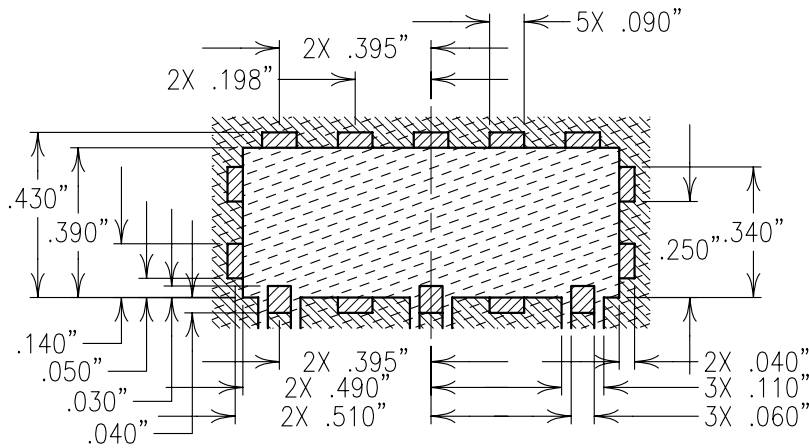


2

1



COPY

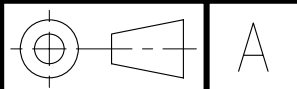


SUGGESTED FOOTPRINT

ELECTRICAL CHARACTERISTICS—PRELIMINARY SPECS

	ANTENNA-TX	ANTENNA-RX
PASSBAND	1610-1626.5 MHz	2483.5-2500 MHz
PB INSERTION LOSS	1.0 dB MAX	3.0 dB(2.5 typ)
PORT SWR IN PASSBAND IN/OUT	1.7:1(1.5:1 typ)	1.7:1(1.5:1 typ)
PASSBAND RIPPLE	0.2 dB p-p	0.4 dB p-p
REJECTION:		
	2483.5-2500 MHz	55 dBc
	3220-3253,4830-4879.5 MHz	5 dBc
	1480-1496,2400-2450,2570-2600 MHz	20 dBc
	1610-1626.5 MHz	55 dBc
POWER HANDLING:		
	1610-1626.5 MHz	1.0 W (TX) 1.0 W (ANT.)
REJECTION: 3220-3253 MHz	35 dBc	TX PORT TO RX PORT
4830-4879.5 MHz	35 dBc	
TEMPERATURE RANGE:	-30° TO +80°C	

Confidential and Proprietary information of ComNav Engineering Inc. Do Not Duplicate or Use Without Permission. ComNav Engineering Inc. claims Copyright in this document as of the Creation, last revision, and last updated dates. All Rights Reserved.



NOTES:
 NO TIN PLATING UNDER SOLDER MASK.
 RECOMMENDED ATTACHMENT METHOD: SILVER EPOXY OR REFLOW NOT TO EXCEED AS INDICATED BELOW:
 TEMP.(°C) MAX.TIME(SEC)

215	90		COPPER—NO TIN PLATING
230	60		TIN PLATED COPPER
245	30		SOLDER MASK
260	15		

ENGLISH / METRIC ENGLISH	CHECKED BY				
TOLERANCES UNLESS OTHERWISE SPECIFIED MACHINED SURFACES TO BE 125 OR BETTER REMOVE ALL BURRS	DRAWN BY PBF				
ENGLISH (INCHES) .XX ±.02 .XXX ±.01	ENGINEER MJG	II	08JUN99	MJG	DEV.
METRIC (MM) .X ±.25 .XX ±.13	SCALE 2:1	REV	DATE	BY	DCN No.
ANGLES ± 0° 30'	DATE 11JUN99	APPLIC: COAXIAL FILTER			
	MATERIAL: N/A	TITLE: 6DCR4BC-1619/2492-LX			SHEET NO/OF 1 1
	FINISH: N/A	DRAWING No. 0L0197			