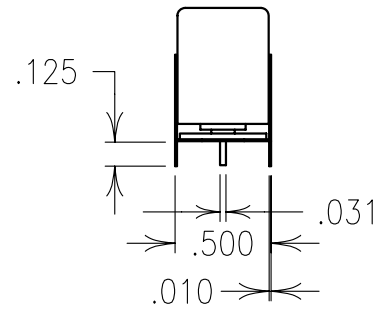
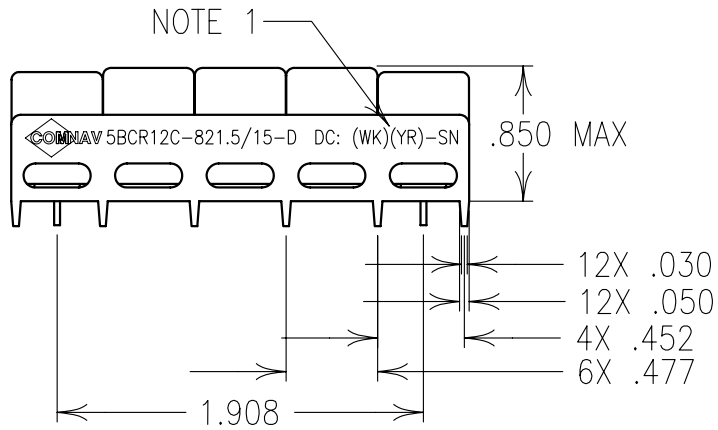


2

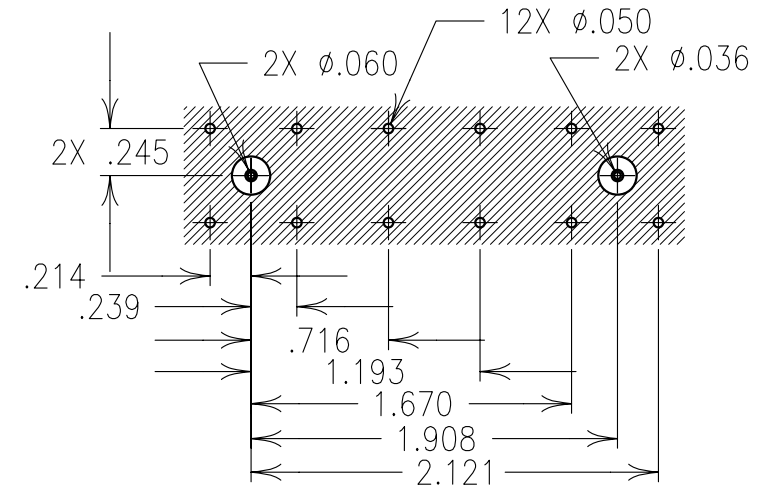
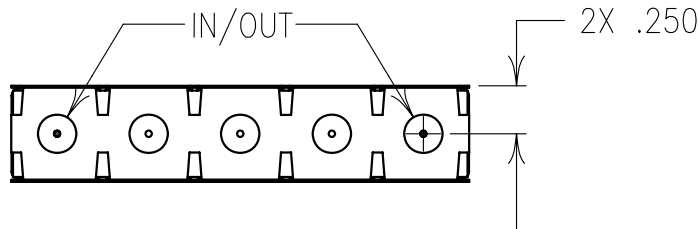
1

ELECTRICAL SPECIFICATIONS

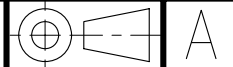
CENTER FREQ.(fo(*))	829.5,840, 874.5,885 MHz
3 dB BANDWIDTH	20 MHz NOM
1 dB BANDWIDTH	11 MHz NOM
LOSS @ fo	≤2.0 dB
VSWR	≤1.5:1
30 dB REJECTION	±20 MHz
60 dB REJECTION	±40 MHz
IMPEDANCE	50 OHMS



COPY



Confidential and Proprietary information of ComNav Engineering Inc. Do Not Duplicate or Use Without Permission. ComNav Engineering Inc. claims Copyright in this document as of the Creation, last revision, and last updated dates. All Rights Reserved.



NOTES:
1) DC: IS ON ONE SIDE ONLY.

ENGLISH / METRIC ENGLISH	CHECKED BY					
TOLERANCES UNLESS OTHERWISE SPECIFIED MACHINED SURFACES TO BE 125 OR BETTER REMOVE ALL BURRS	DRAWN BY PBF					
ENGLISH (INCHES) .XX ±.01 .XXX ±.005	ENGINEER SWB	II	02OCT99	SWB	DEV.	INT. ISS. PER 1098
METRIC (MM) .X ±.25 .XX ±.13	REV	DATE	BY	DCN No.	REMARKS	
ANGLES ± 0° 30'	SCALE 1:1	APPLIC: COAXIAL FILTER				
	DATE 08OCT99	TITLE: 5BCR12C-fo(*)/20-D			SHEET NO/OF 1 1	
	MATERIAL: N/A	DRAWING No. 0L0191				
	FINISH: N/A					