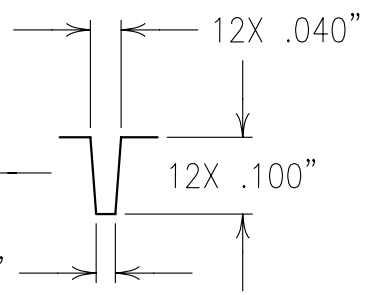
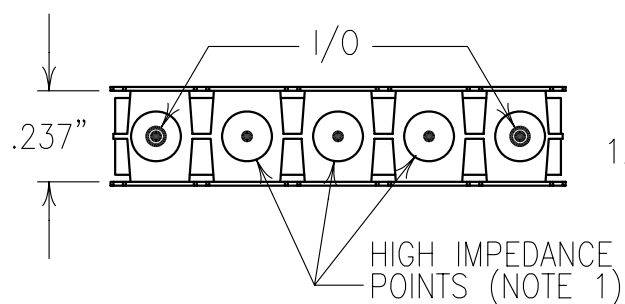
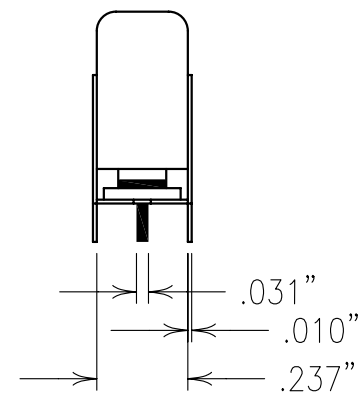
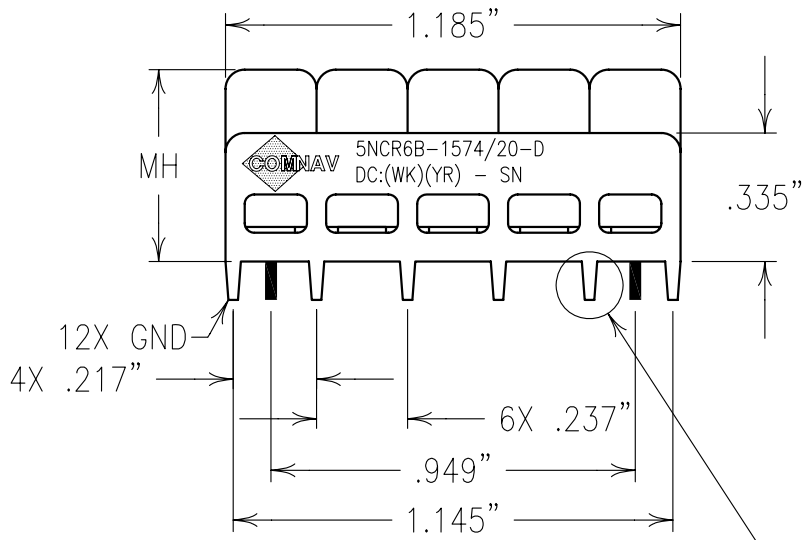


ELECTRICAL CHARACTERISTICS

CENTER FREQUENCY	1574.4 MHz
3dB BANDWIDTH	20 MHz NOM
PASSBANDS	DC-1564,1584-2700 MHz
60 dB ATTEN.	fo± 0.5 MHz
VSWR	2:1 TYP



**COPY**

NOTES:  
 NOTE1-THERE MUST BE A MINIMUM OF .050 AIR BETWEEN GROUND AND HIGH IMPEDANCE POINTS. THIS MAY BE DONE BY RAISING THE FILTER OR BY DRILLING OUT THE BOARD.  
 MAX REFLOW TEMP. 240°C FOR 30 SEC., OR 260°C FOR 15 SEC.  
 HAND OR WAVE SOLDERING RECOMMENDED.  
 FOR RECOMMENDED FOOTPRINT SEE FP0056.

Confidential and Proprietary information of ComNav Engineering Inc. Do Not Duplicate or Use Without Permission. ComNav Engineering Inc. claims Copyright in this document as of the Creation, last revision, and last updated dates. All Rights Reserved.								A
ENGLISH / METRIC ENGLISH	CHECKED BY							
TOLERANCES UNLESS OTHERWISE SPECIFIED	DRAWN BY	A	19JUN01	SWB	DEV.	GEN. REV. PER 1653		
MACHINED SURFACES TO BE 125 / OR BETTER	ENGINEER	II	14MAY99	MJG	DEV.	INI. ISS. PER 1022		
REMOVE ALL BURRS	ENGINEER	REV	DATE	BY	DCN No.	REMARKS		
ENGLISH (INCHES)	METRIC (MM)	SCALE	APPLIC: CERAMIC COAXIAL FILTER					
.XX ±.02	.X ±.25	2:1	TITLE: 5NCR6B-1574/20-D					
.XXX ±.010	.XX ±.13	DATE	DRAWING No. 0L0188					
ANGLES ± 0° 30'		24AUG01	SHEET OF 1 1					
		FINISH: JACKET: NI/SILVER RESONATOR: SILVER PINS: TIN PLATED BRASS						