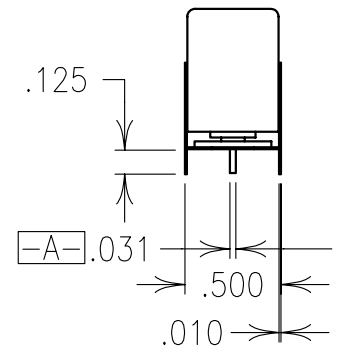
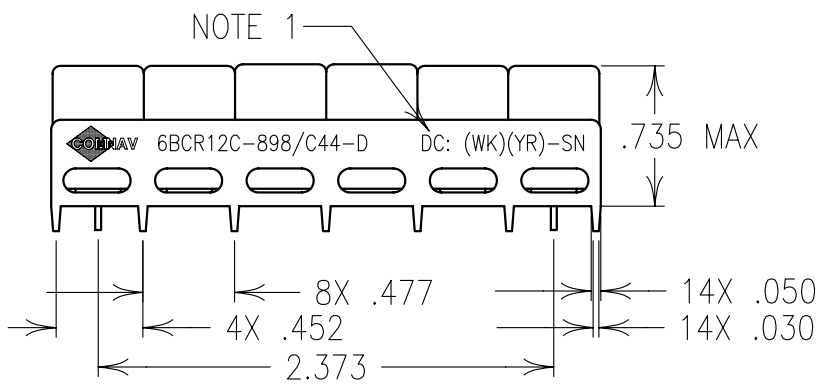


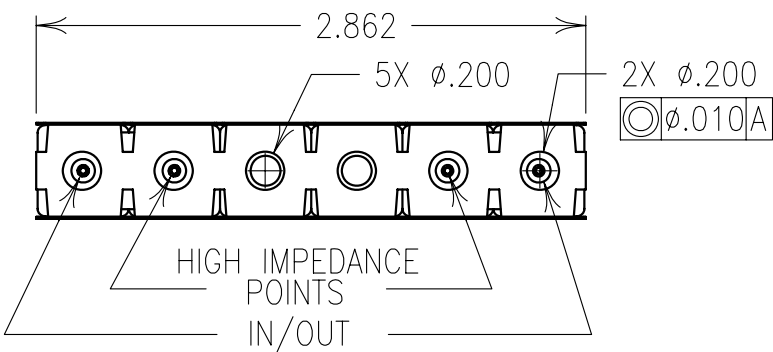
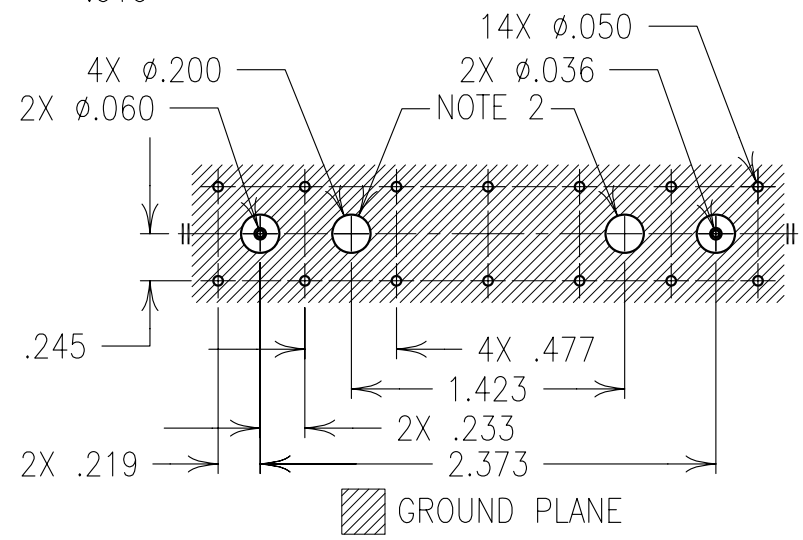
2

1

ELECTRICAL SPECIFICATIONS	
CENTER FREQUENCY	898 MHz
PASSBAND	880-915 MHz
INSERTION LOSS	2.5 dB
INSERTION LOSS VARIATION	0.8 dB MAX
20 dB REJECTION	860-870 MHz
27.5 dB REJECTION	925-960 MHz
VSWR	1.6:1 MAX
TEMPERATURE RANGES:	
OPERATIONAL:	-10° TO +80°C
EXTENDED:	-33° TO +80°C



**COPY**



Confidential and Proprietary information of ComNav Engineering Inc. Do Not Duplicate or Use Without Permission. ComNav Engineering Inc. claims Copyright in this document as of the Creation, last revision, and last updated dates. All Rights Reserved.

NOTES:

- 1) DC: IS ON ONE SIDE ONLY.
- 2) THERE MUST BE A MINIMUM OF .050 AIR SPACE BETWEEN GROUND AND HIGH IMPEDANCE POINTS. THIS MAY BE ACCOMPLISHED BY RAISING THE FILTER OR DRILLING OUT THE BOARD.

ENGLISH / METRIC ENGLISH	CHECKED BY				
TOLERANCES UNLESS OTHERWISE SPECIFIED MACHINED SURFACES TO BE 125 OR BETTER REMOVE ALL BURRS	DRAWN BY PBF	II	03MAR99	MJG	DEV.
ENGLISH (INCHES) .XX ±.01 .XXX ±.005	ENGINEER MJG	REV	DATE	BY	DCN No.
METRIC (MM) .X ±.25 .XX ±.13	SCALE 1:1	APPLIC: COAXIAL FILTER			
ANGLES ± 0° 30'	DATE 03MAR99	TITLE: 6BCR12C-898/C44-D			SHEET NO/OF 1 1
COMNAV ENGINEERING INC.	MATERIAL: N/A	DRAWING No. 010171			
	FINISH: N/A				