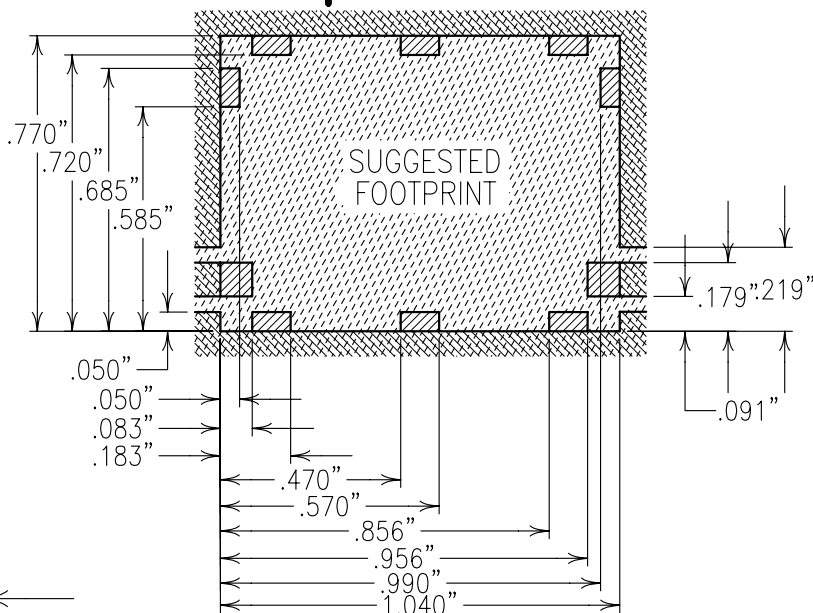
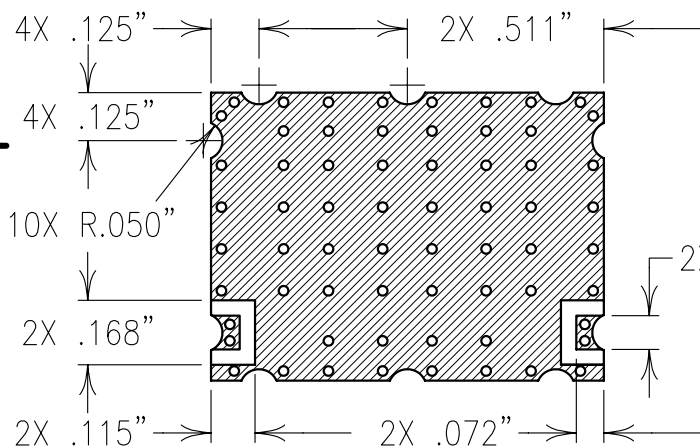
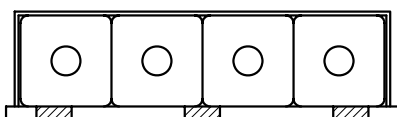
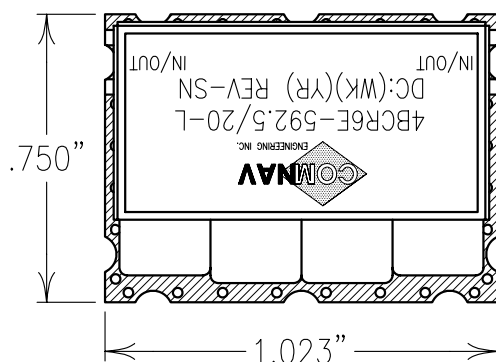


2

1



## ELECTRICAL CHARACTERISTICS

CENTER FREQUENCY 592.5 MHz  
PASSBAND LOSS 3.3 MAX

## PASSBAND LOSS FLATNESS:

592.5±1.5 MHz 0.15 dB P-P MAX  
592.5±2.0 MHz 0.28 dB P-P MAX  
592.5±3.0 MHz 0.50 dB P-P MAX  
592.5±6.0 MHz 1.10 dB P-P MAX

## MIN. REJ. REL. TO 592.5 MHz:

572 MHz 12 dB MIN  
565 MHz 32 dB MIN  
540 MHz 53 dB MIN  
6-120 MHz 80 dB MIN

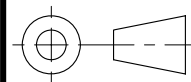
## MIN. REJ. REL. TO 96 MHz:

620 MHz 28 dB MIN  
670 MHz 55 dB MIN  
700-900 MHz 90 dB MIN  
900-8000 MHz 55 dB MIN

VSWR AT 50 OHMS 1.5:1  
ALL SPECS OVER -40° TO 85° C

COPY

Confidential and Proprietary information of ComNav Engineering Inc.  
Do Not Duplicate or Use Without Permission. ComNav Engineering Inc.  
claims Copyright in this document as of the Creation, last revision,  
and last updated dates. All Rights Reserved.



A

## NOTES:

NO TIN PLATING UNDER SOLDER MASK.  
RECOMMENDED ATTACHMENT METHOD: SILVER EPOXY  
OR REFLOW NOT TO EXCEED AS INDICATED BELOW:

TEMP.(°C) MAX.TIME(SEC)

215 90

230 60

245 30

260 15



COPPER-NO TIN PLATING



TIN PLATED COPPER



SOLDER MASK

ENGLISH / METRIC  
ENGLISH

TOLERANCES UNLESS  
OTHERWISE SPECIFIED  
MACHINED SURFACES  
TO BE 125 OR BETTER  
REMOVE ALL BURRS

ENGLISH  
(INCHES)  
.XX ±.02  
.XXX ±.01

METRIC  
(MM)  
.XX ±.25  
.XX ±.13

ANGLES ± 0° 30'



CHECKED BY

DRAWN BY  
PBFENGINEER  
MJGSCALE  
2:1DATE  
05FEB99

MATERIAL: N/A

FINISH: N/A

REV II

DATE 05FEB99

BY MJG

DEV.

INIT. ISS. PER 0919

REV

DATE

BY

DCN No.

REMARKS

APPLIC:

COAXIAL FILTER

TITLE:

4BCR6E-592.5/20-L

SHEET NO/OF

1 1

DRAWING No.

OL0166

\\DRAFTING\\DWG\\OL\\OL0166.DWG