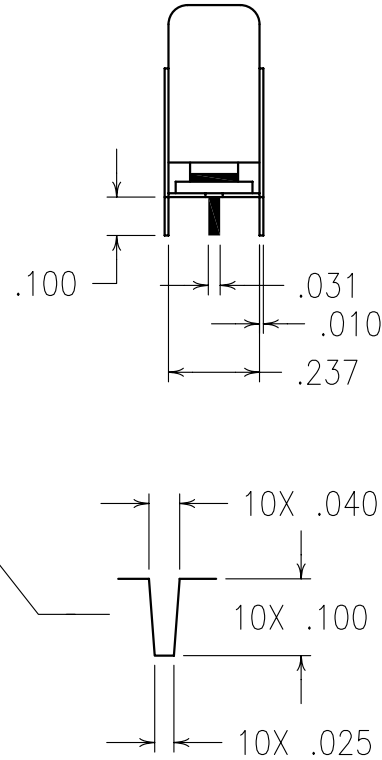
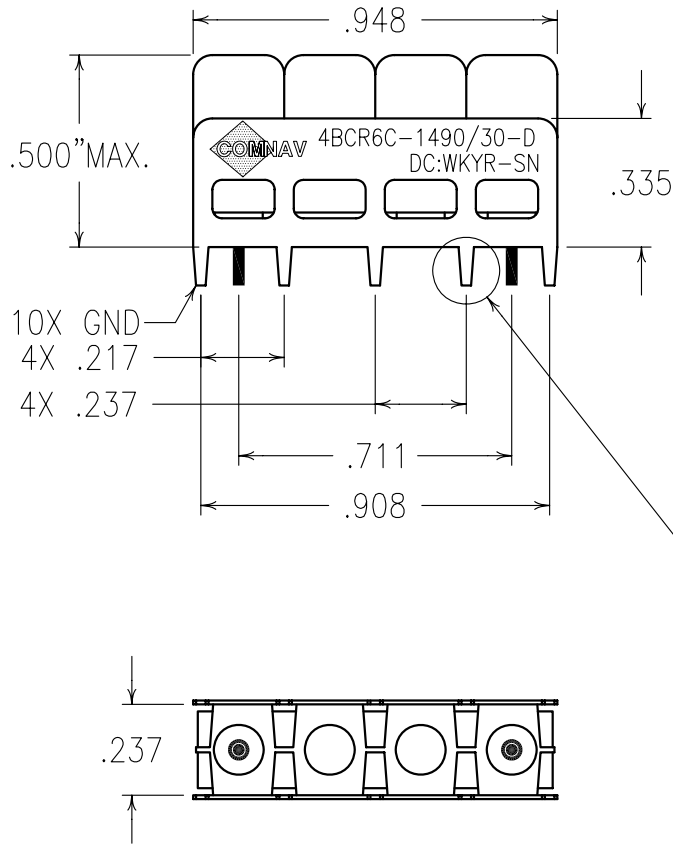


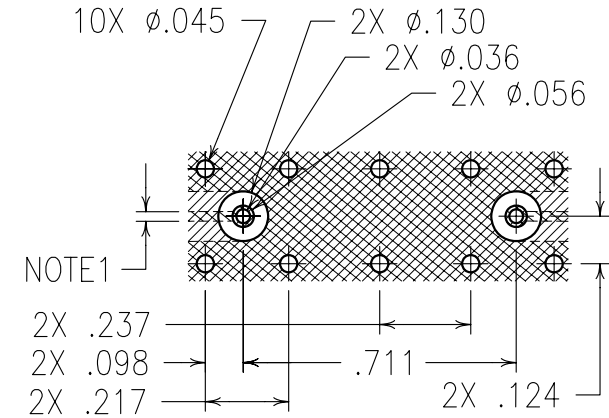
2

1



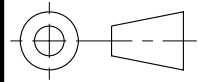
ELECTRICAL CHARACTERISTICS	
CENTER FREQUENCY	1490 MHz
3dB BANDWIDTH	30 MHz NOM
PASSBAND	1486.5 TO 1493.5
PASSBAND LOSS	<2.5 dB
PASSBAND VSWR	<1.5:1
PASSBAND PHASE LINEARITY	±0.5 DEGS
60 dB REJECTION	1578 MHz

COPY



 TIN PLATED COPPER ON BOTTOM OF BOARD
 TIN PLATED COPPER ON TOP OF BOARD


Confidential and Proprietary information of ComNav Engineering Inc. Do Not Duplicate or Use Without Permission. ComNav Engineering Inc. claims Copyright in this document as of the Creation, last revision, and last updated dates. All Rights Reserved.



A

NOTES:

HAND OR WAVE SOLDERING.
 MAX REFLOW TEMP. 240°C FOR 30 SEC.,
 OR 260°C FOR 15 SEC.
 NOTE1 AS REQUIRED FOR 50 OHMS
 CONNECTING LINE ON BOARD
 BACK-PLANE

ENGLISH / METRIC ENGLISH	CHECKED BY					
TOLERANCES UNLESS OTHERWISE SPECIFIED MACHINED SURFACES TO BE 125 OR BETTER REMOVE ALL BURRS	DRAWN BY PBF	II	02DEC98	MJG	DEV.	INIT. REV. PER 0846
ENGLISH (INCHES) .XX ±.02 .XXX ±.01	ENGINEER MJG	REV	DATE	BY	DCN No.	REMARKS
METRIC (MM) .X ±.25 .XX ±.13	SCALE 2:1	APPLIC: COAXIAL FILTER				
ANGLES ± 0° 30'	DATE 02DEC98	TITLE: 4BCR6C-1490/30-D				SHEET NO/OF 1 1
	FINISH: BOARD: TINPLATED COPPER JACKET: NI/SILVER RESONATOR: SILVER	DRAWING No. 010147				

A