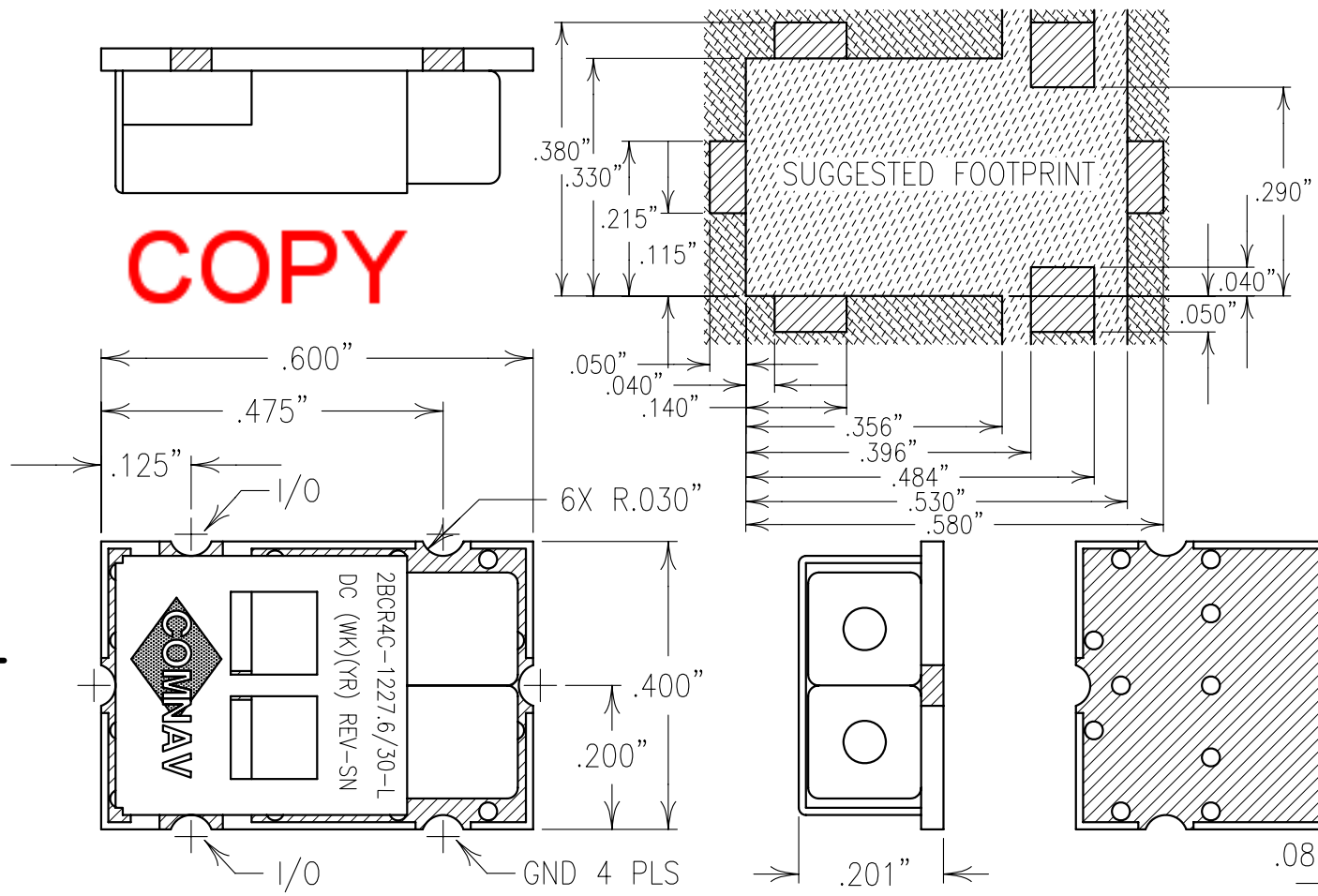
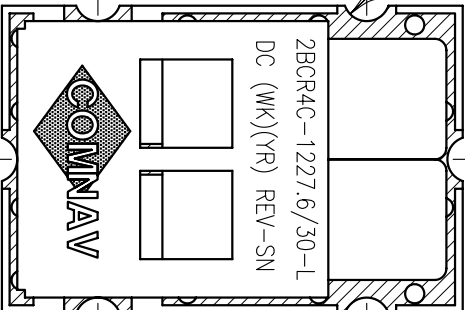


**COPY**



ELECTRICAL CHARACTERISTICS	
CENTER FREQUENCY	1227.6 MHz
BANDWIDTH(MIN)	≥ ±10 MHz
INSERTION LOSS(MAX)	≤ 1.5 dB
RIPPLE INSIDE BW(MAX)	0.5 dB
OUT OF BAND REJECTION(MIN):	
-AT Fo ±50 MHz:	≥ 14 dB
-AT Fo ±75 MHz:	≥ 22 dB
-AT Fo ±300 MHz:	≥ 40 dB
IMPEDANCE IN/OUT(NOM)	50 OHM
VSWR IN/OUT (MAX)	2.0:1
GROUP DELAY INSIDE BOTH CHANNELS BANDWIDTH(MAX)	≤ 15 ns
GROUP DELAY VARIATION VERSUS FREQUENCY INSIDE BW(max)	≤ 3ns pk-pk
INPUT POWER INSIDE BW	30 dBm



Confidential and Proprietary information of ComNav Engineering Inc. Do Not Duplicate or Use Without Permission. ComNav Engineering Inc. claims Copyright in this document as of the Creation, last revision, and last updated dates. All Rights Reserved.

NOTES:

NO TIN PLATING UNDER SOLDER MASK.  
RECOMMENDED ATTACHMENT METHOD: SILVER EPOXY OR REFLOW NOT TO EXCEED AS INDICATED BELOW:  
TEMP.(°C) MAX.TIME(SEC)

215	90		COPPER-NO TIN PLATING
230	60		TIN PLATED COPPER
245	30		SOLDER MASK
260	15		

ENGLISH / METRIC ENGLISH	CHECKED BY					
TOLERANCES UNLESS OTHERWISE SPECIFIED MACHINED SURFACES TO BE 125 / OR BETTER REMOVE ALL BURRS	DRAWN BY PBF	A	13AUG98	SWB	DEV.	GEN. REV. PER 0693
ENGLISH (INCHES) XX ±.02 XXX ±.01	ENGINEER SWB	II	04JUN98	SWB	DEV.	INI. ISS. PER 0607
METRIC (MM) .X ±.25 .XX ±.13	SCALE 4:1	REV	DATE	BY	DCN No.	REMARKS
ANGLES ± 0° 30'	DATE 24AUG98	APPLIC: COAXIAL FILTER				
	FINISH: CARRIER BOARD:TIN PLATED COPPER JACKET:NI/SILVER RESONATOR:SILVER	TITLE: 2BCR4C-1227.6/30-L	DRAWING No. 0L0116			
						SHEET NO/OF 1 1