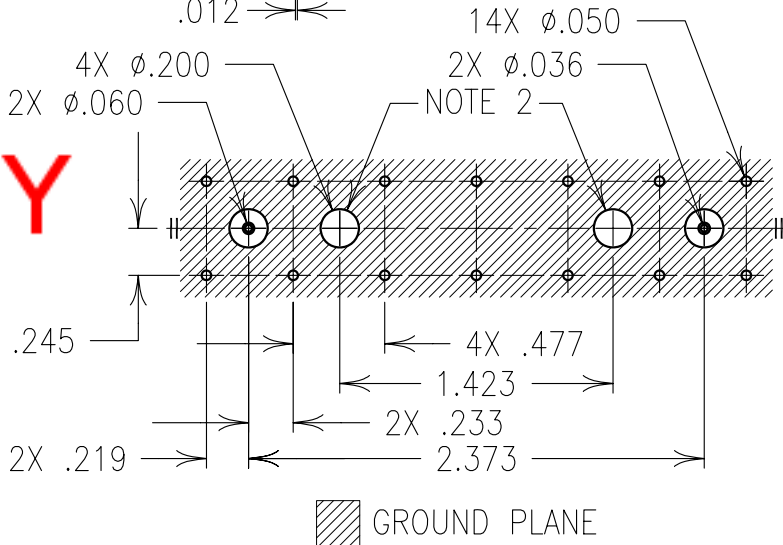
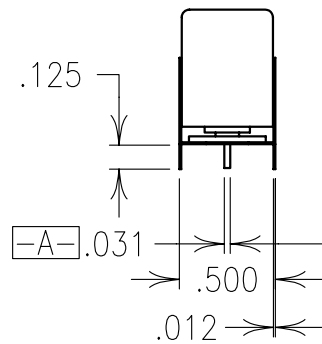
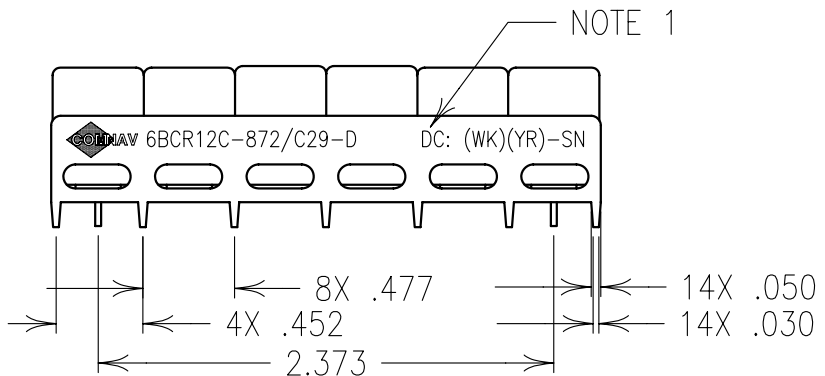


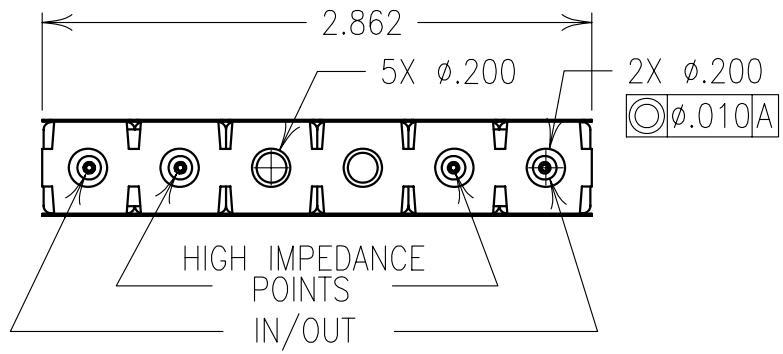
2

1

ELECTRICAL SPECIFICATIONS	
CENTER FREQUENCY	872 Mhz
PASSBAND	806-824 Mhz
PASSBAND INSERTION LOSS	1.5 dB
PASSBAND VSWR	1.7:1
ABSOLUTE REJECTION <776 MHz	70 dB
ABSOLUTE REJECTION >851 MHz	70 dB
OPERATING TEMP.	-20 TO +60°C



COPY



Confidential and Proprietary information of ComNav Engineering Inc. Do Not Duplicate or Use Without Permission. ComNav Engineering Inc. claims Copyright in this document as of the Creation, last revision, and last updated dates. All Rights Reserved.

NOTES:

- DC: IS ON ONE SIDE ONLY.
- THERE MUST BE A MINIMUM OF .050 AIR SPACE BETWEEN GROUND AND HIGH IMPEDANCE POINTS. THIS MAY BE ACCOMPLISHED BY RAISING THE FILTER OR DRILLING OUT THE BOARD.

ENGLISH / METRIC ENGLISH	CHECKED BY				
TOLERANCES UNLESS OTHERWISE SPECIFIED MACHINED SURFACES TO BE 125 OR BETTER REMOVE ALL BURRS	DRAWN BY PBF	II	02APR98	MJG	DEV.
ENGLISH (INCHES) .XX ±.01 .XXX ±.005	ENGINEER MJG	REV	DATE	BY	DCN No.
METRIC (MM) .X ±.25 .XX ±.13	SCALE 1:1	APPLIC: COAXIAL FILTER			
ANGLES ± 0° 30'	DATE 03APR98	TITLE: 6BCR12C-872/C29-D			SHEET NO/OF 1 1
COMNAV ENGINEERING INC.	Material: N/A Finish: N/A	DRAWING No. 010101			