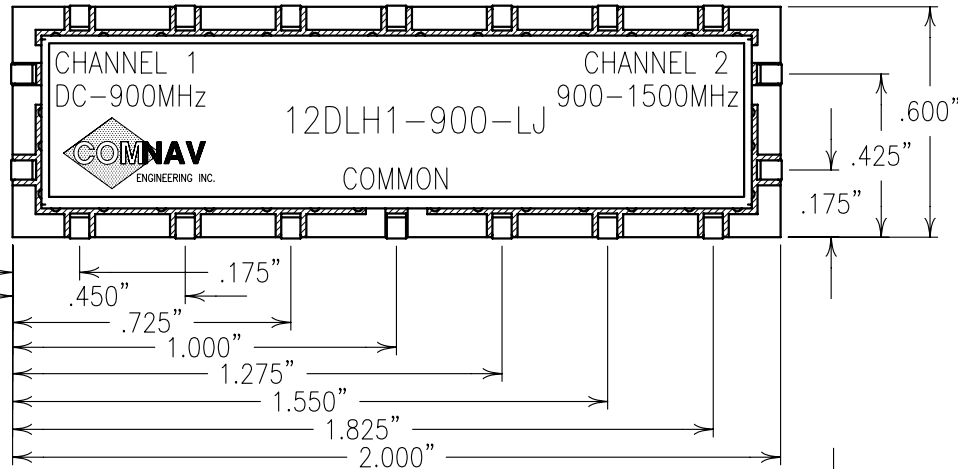
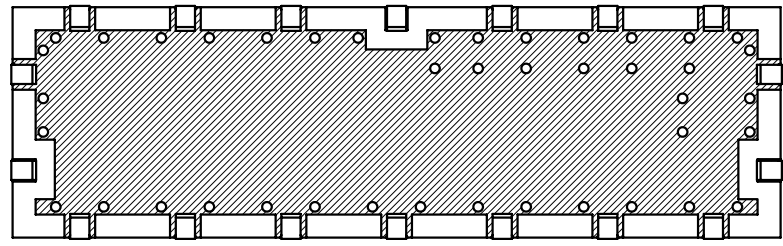
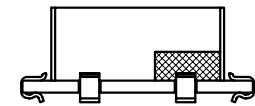
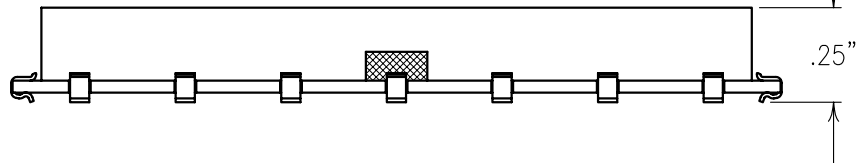


2

1



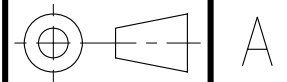
ELECTRICAL CHARACTERISTICS		
	CHANNEL 1	CHANNEL 2
3.0 dB BANDWIDTH	DC - 900 MHz	900 - 1500 MHz min.
PASSBAND	635 - 815 MHz	985 - 1165 MHz
PASSBAND LOSS	≤ 1.5 dB	≤ 1.5 dB
VSWR	≤ 1.5:1	≤ 1.5:1
50 dB REJECTION	1000 - 1500 MHz	DC - 800 MHz
IMPEDANCE (OHMS)	50	50




**COPY**

 COPPER

Confidential and Proprietary information of ComNav Engineering Inc.  
Do Not Duplicate or Use Without Permission.  
ComNav Engineering Inc. claims Copyright in this document as of the  
Creation, last revision, and last updated dates. All Rights Reserved.



NOTES:  
SEE FOOT PRINT FP0001  
NO TIN PLATING UNDER SOLDER MASK.  
RECOMMENDED ATTACHMENT METHOD: SILVER EPOXY  
OR REFLOW NOT TO EXCEED AS INDICATED BELOW:  
TEMP.(°C) MAX.TIME(SEC)  
215 60  
230 30  
245 15

ENGLISH / METRIC ENGLISH	CHECKED BY				
TOLERANCES UNLESS OTHERWISE SPECIFIED	DRAWN BY				
MACHINED SURFACES TO BE 125 / OR BETTER	ENGINEER	II	24MAR98	MJG	DEV.
REMOVE ALL BURRS	SCALE	REV	DATE	BY	DCN No.
ENGLISH (INCHES) .XX ±.02 .XXX ±.01	METRIC (MM) .X ±.25 .XX ±.13	APPLIC:	COAXIAL FILTER		
ANGLES ± 0° 30'	DATE	TITLE:	12DLH1-900-LJ		SHEET NO/OF 1 1
	MATERIAL: N/A	DRAWING No.		0L0099	
	FINISH: N/A				