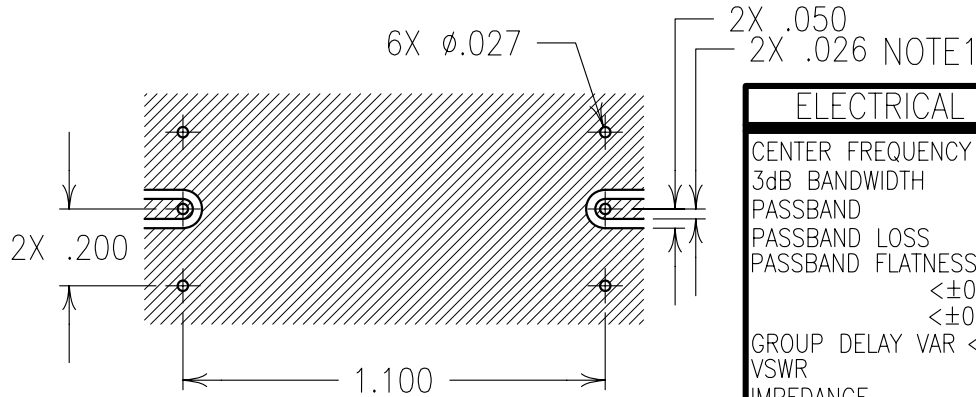
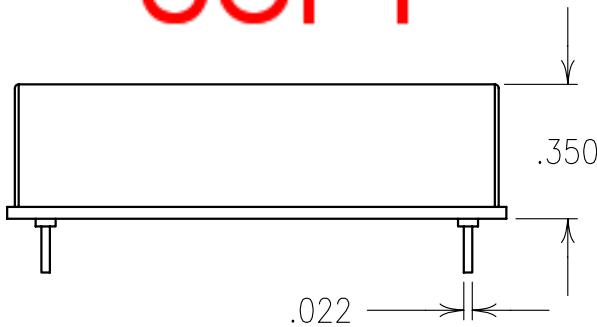


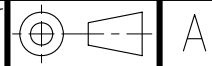
**COPY**



ELECTRICAL CHARACTERISTICS	
CENTER FREQUENCY	490 MHz
3dB BANDWIDTH	95 MHz
PASSBAND	fo ±30 MHz
PASSBAND LOSS	<2.0 dB
PASSBAND FLATNESS	<±0.3 dB OVER fo ±30 MHz <±0.1 dB OVER ANY 10 MHz
GROUP DELAY VAR	<2.5nsec OVER fo±30MHz
VSWR	<1.5:1
IMPEDANCE	50 OHMS
15 dB REJECTION GOAL(12dB MIN)	570 MHz
40 dB REJECTION	285 MHz
TEMPERATURE RANGE	-40°C TO +80°C

TIN PLATED COPPER

Confidential and Proprietary information of ComNav Engineering Inc. Do Not Duplicate or Use Without Permission. ComNav Engineering Inc. claims Copyright in this document as of the Creation, last revision, and last updated dates. All Rights Reserved.



NOTES:

HAND OR WAVE SOLDERING.  
 MAX REFLOW TEMP. 240°C FOR 30 SEC.,  
 OR 260°C FOR 15 SEC.  
 NOTE1 AS NEEDED FOR 50 OHM

ENGLISH / METRIC ENGLISH	CHECKED BY	C	31OCT98	MJG	DEV.	GEN. REV. PER 0786
TOLERANCES UNLESS OTHERWISE SPECIFIED MACHINED SURFACES TO BE 125 / OR BETTER REMOVE ALL BURRS	DRAWN BY	B	13JUL98	MJG	DEV.	GEN. REV. PER 0636
	ENGINEER	A	08JUL98	MJG	DEV.	GEN. REV. PER 0635
	REV	DATE	BY	DCN No.	REMARKS	
SCALE 2:1	APPLIC: LC BANDPASS					
DATE 02NOV98	TITLE: 4LCD-490					SHEET NO/OF 1 1
FINISH: CARRIER BOARD:TIN PLATED COPPER JACKET:NI/SILVER	DRAWING No. 0L0075					

