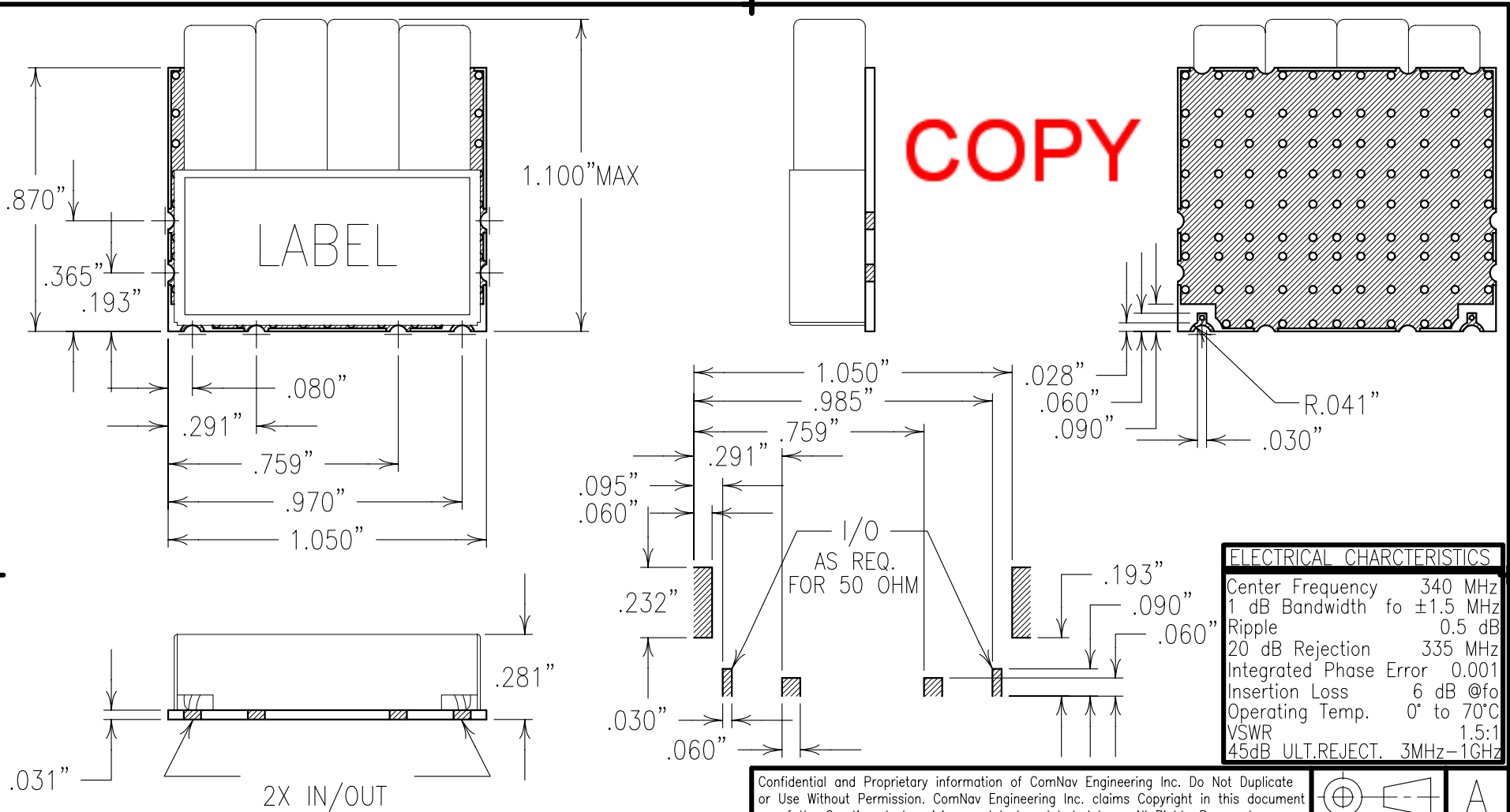


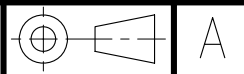
2

1



ELECTRICAL CHARACTERISTICS	
Center Frequency	340 MHz
1 dB Bandwidth fo ±1.5 MHz	
Ripple	0.5 dB
20 dB Rejection	335 MHz
Integrated Phase Error	0.001
Insertion Loss	6 dB @fo
Operating Temp.	0° to 70°C
VSWR	1.5:1
45dB ULT.REJECT.	3MHz-1GHz

Confidential and Proprietary information of ComNav Engineering Inc. Do Not Duplicate or Use Without Permission. ComNav Engineering Inc. claims Copyright in this document as of the Creation, last revision, and last updated dates. All Rights Reserved.



NOTES:

RECOMMENDED ATTACHMENT METHOD: SILVER EPOXY OR REFLOW NOT TO EXCEED AS INDICATED BELOW:

TEMP.(°C)	MAX. TIME(SEC)
215	90
230	60
245	30
260	15

ENGLISH / METRIC ENGLISH		CHECKED BY				
TOLERANCES UNLESS OTHERWISE SPECIFIED		DRAWN BY PBF				
MACHINED SURFACES TO BE 125 OR BETTER		II	04DEC97	MJG	DEV.	INIT. ISS. PER 0470
REMOVE ALL BURRS		ENGINEER MJG	REV	DATE	BY	DCN No.
ENGLISH (INCHES)	METRIC (MM)	SCALE 2:1				
.XX ±.02	.X ±.25	APPLIC: COAXIAL FILTER				
.XXX ±.01	.XX ±.13	DATE 15DEC97				
ANGLES ± 0° 30'		TITLE: 4BCR6E-340/4-LX				
		SHEET NO/OF 1 1				

SOLDER PADS/COPPER



MATERIALS: JACKET:NI/SIL BOARD:TIN

DRAWING No. 0L0071