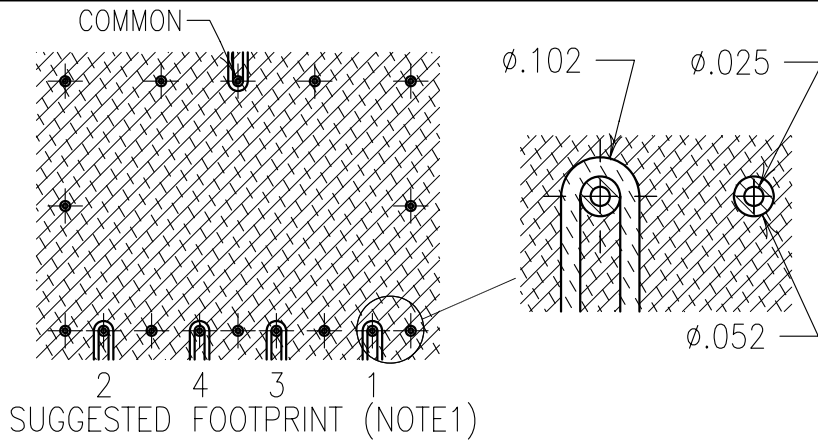


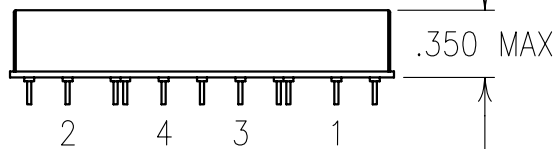
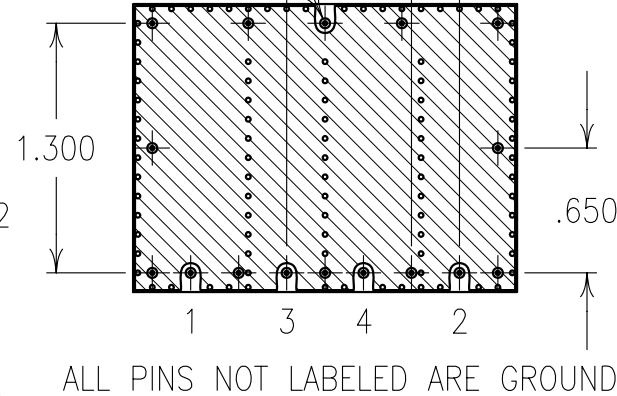
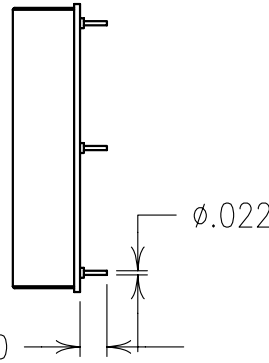
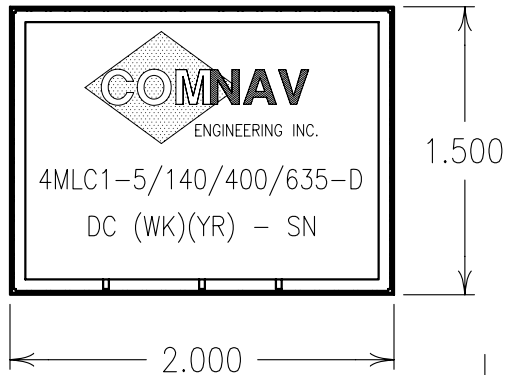
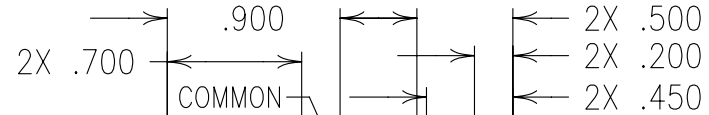
2

1



ELECTRICAL CHARACTERISTICS				
	CHANNEL 1	CHANNEL 2	CHANNEL 3	CHANNEL 4
PASSBAND	DC-5 Mhz	105-175 Mhz	365-435 Mhz	625-645 Mhz
PASSBAND LOSS	≤ 0.5 dB	≤ 1.0 dB	≤ 1.5 dB	≤ 1.5 dB
DELAY VAR(nsec)	N/A	$\leq \pm 4$	$\leq \pm 4$	$\leq \pm 2$
VSWR	$\leq 1.7:1$	$\leq 1.7:1$	$\leq 1.7:1$	$\leq 1.7:1$
40dB REJECTION	50-1000 Mhz	DC->50 Mhz, 350->1000 Mhz	DC->290 Mhz, 540->1000 Mhz	DC->470 Mhz, 750->1000 Mhz
IMPEDANCE	50 OHMS	50 OHMS	50 OHMS	50 OHMS

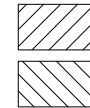
B



COPY



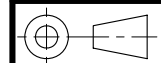
SOLDER MASK



COPPER-NO TIN PLATING



TIN PLATED COPPER



A

Confidential and Proprietary information of ComNav Engineering Inc. Do Not Duplicate or Use Without Permission. ComNav Engineering Inc. claims Copyright in this document as of the Creation, last revision, and last updated dates. All Rights Reserved.

NOTES:

NOTE1 DIMENSIONS ARE SAME AS BOTTOM VIEW (PART SYMMETRICAL).

HAND OR WAVE SOLDERING.

MAX REFLOW TEMP. 240°C FOR 30 SEC., OR 260°C FOR 15 SEC.

ENGLISH / METRIC ENGLISH	CHECKED BY	DATE	BY	DCN No.	REMARKS	
TOLERANCES UNLESS OTHERWISE SPECIFIED MACHINED SURFACES TO BE 125 OR BETTER REMOVE ALL BURRS	DRAWN BY	A	10SEP97	MJG	DEV.	GEN. REV. PER 0431
	ENGINEER	II	25AUG97	MJG	DEV.	INIT. REV. PER 0423
	ENGINEER	MJG				
ENGLISH (INCHES) .XX ±.02 .XXX ±.01	METRIC (MM) .X ±.25 .XX ±.13	SCALE	APPLIC: LUMPED COMPONENT QUADRAPLEXER			
ANGLES ± 0° 30'	DATE	10SEP97	TITLE:		4MLC1-5/140/400/635-D	SHEET NO/OF 1 1
COMNAV ENGINEERING INC.	FINISH:	CARRIER BOARD:TIN PLATED COPPER JACKET:NI/SILVER		DRAWING No.	0L0062	

A