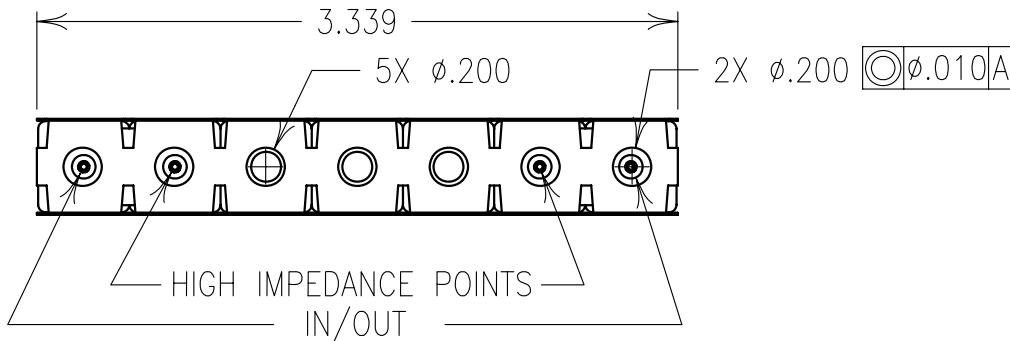
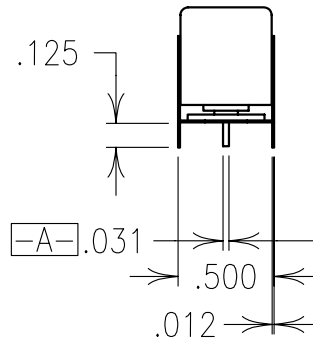
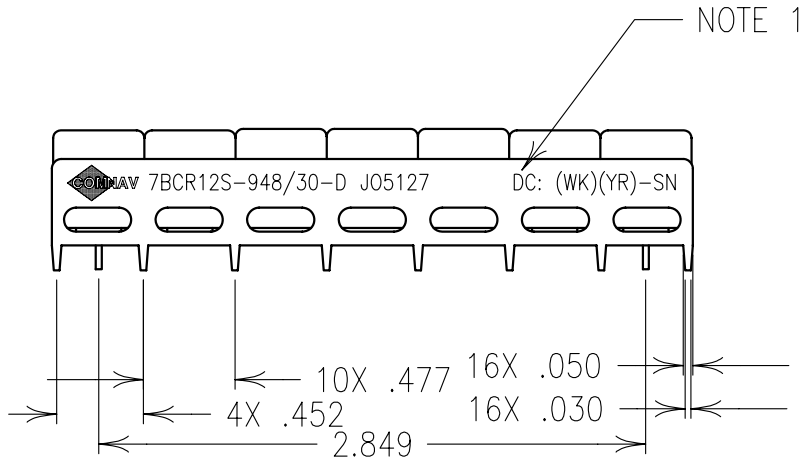


Confidential and Proprietary information of ComNav Engineering Inc. Do Not Duplicate or Use Without Permission. ComNav Engineering Inc. claims Copyright in this document as of the Creation, last revision, and last updated dates. All Rights Reserved.

ELECTRICAL SPECIFICATIONS

| | |
|-----------------------|----------------|
| 2.8 dB PASSBAND | 935 - 960 Mhz |
| 1.5:1 VSWR PASSBAND | 935 - 960 Mhz |
| 60 dB REJECTION | DC - 915 Mhz |
| 35 dB REJECTION | 925 Mhz |
| 40 dB REJECTION | 985 - 3000 Mhz |
| PASSBAND RIPPLE | .5 dB |
| ATTENUATION @ 925 Mhz | > 30 dB |



COPY

NOTES:

1 DC: IS ON ONE SIDE ONLY.

| | | | | | | | |
|--|--|------------------------------|--|-------------------------|--------------------|------|-----------------|
| ENGLISH / METRIC ENGLISH | | CHECKED BY | | | | | |
| TOLERANCES UNLESS OTHERWISE SPECIFIED MACHINED SURFACES TO BE 125 OR BETTER REMOVE ALL BURRS | | DRAWN BY PBF | | II | 07JUL97 | SWB | DEV. |
| ENGLISH (INCHES) .XX ±.01 .XXX ±.005 | | METRIC (MM) .X ±.25 .XX ±.13 | | ENGINEER SWB | REV | DATE | BY DCN No. |
| ANGLES ± 0° 30' | | SCALE 1:1 | | APPLIC: COAXIAL FILTER | | | |
| | | DATE 08JUL97 | | TITLE: 7BCR12S-948/30-D | | | SHEET NO/OF 1 1 |
| COMNAV ENGINEERING INC. | | Material: N/A | | | DRAWING No. 0L0045 | | |
| | | Finish: N/A | | | | | |