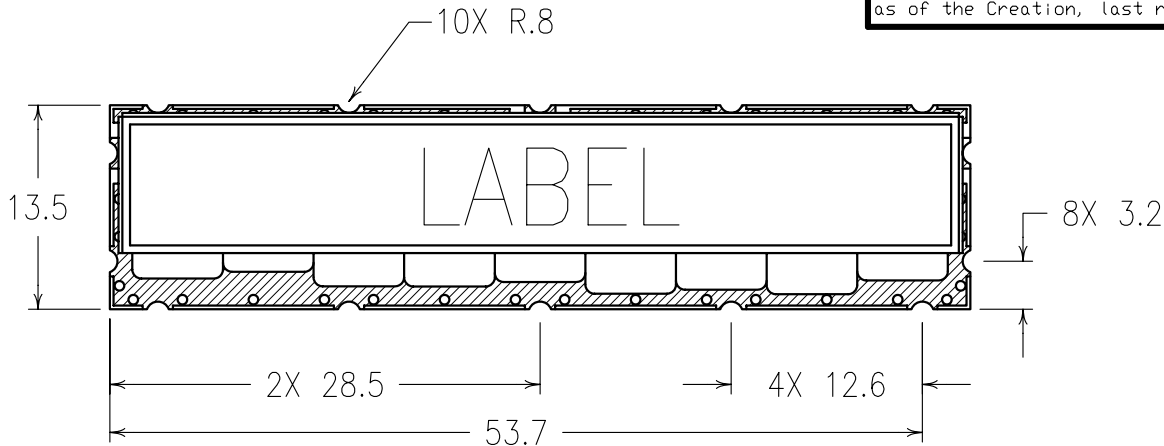


2

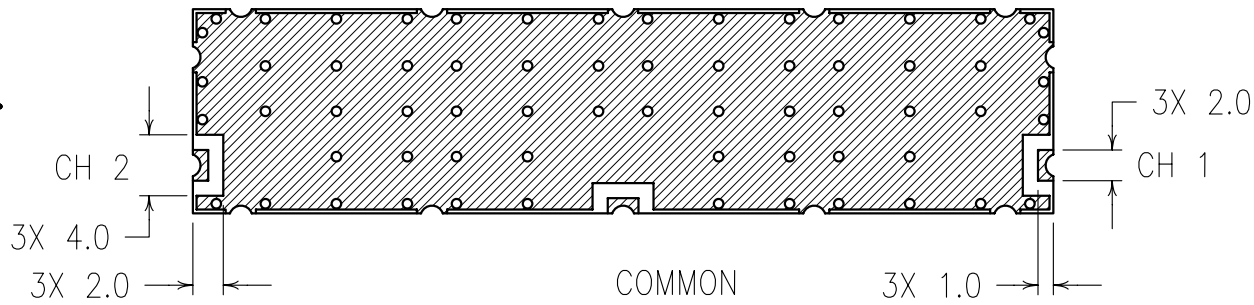
1

Confidential and Proprietary information of ComNav Engineering Inc. Do Not Duplicate or Use Without Permission. ComNav Engineering Inc. claims Copyright in this document as of the Creation, last revision, and last updated dates. All Rights Reserved.

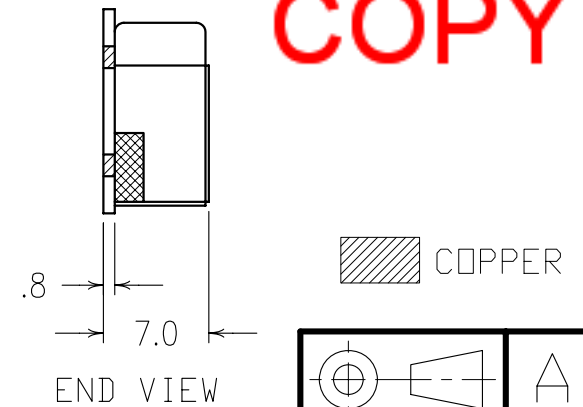


TOP VIEW

| ELECTRICAL CHARACTERISTICS | | |
|----------------------------|------------------------|------------------|
| | CHANNEL 1 | CHANNEL 2 |
| CENTER FREQUENCY(f_0) | 2315 MHz | 2385 MHz |
| PASSBAND | $f_0 \pm 15$ MHz | $f_0 \pm 15$ MHz |
| 50 dB REJECTION | 2370-2400 | N/A |
| 70 dB REJECTION | N/A | 2300-2330 |
| PASSBAND LOSS | 3.0 dB | 4.0 dB |
| RIPPLE | 0.8 dB | 0.8 dB |
| IMPEDANCE | 50 ohms | |
| VSWR | 1.7:1 MAX (1.5:1 GOAL) | |
| OPERATING TEMP. | -40°C TO +80°C | |
| INPUT POWER | 2 WATTS | |



BOTTOM VIEW



END VIEW

COPY

NOTES:

| | | | | | | |
|--|---------------|------------------------------|---------|-----|---------|--------------------|
| ENGLISH / METRIC METRIC TOLERANCES UNLESS OTHERWISE SPECIFIED MACHINED SURFACES TO BE 125 OR BETTER REMOVE ALL BURRS ENGLISH (INCHES) XX ± .02 .XXX ± .01 METRIC (MM) X ± .25 .XX ± .13 ANGLES ± 0° 30' | CHECKED BY | | | | | |
| | DRAWN BY | A | 24MAR97 | MJG | DEV. | GEN. REV. PER 0215 |
| | ENGINEER | II | 28FEB97 | MJG | DEV. | INT. ISS. PER 0208 |
| | | REV | DATE | BY | DCN No. | REMARKS |
| | SCALE | APPLIC: COAXIAL FILTER | | | | |
| | DATE | TITLE: 9DCR6B-2315/2385/30-L | | | | SHEET NO/DF |
| | 24MAR97 | | | | | 1 1 |
| | Material: N/A | DRAWING No. | | | | |
| | Finish: N/A | 0L0024 | | | | |

