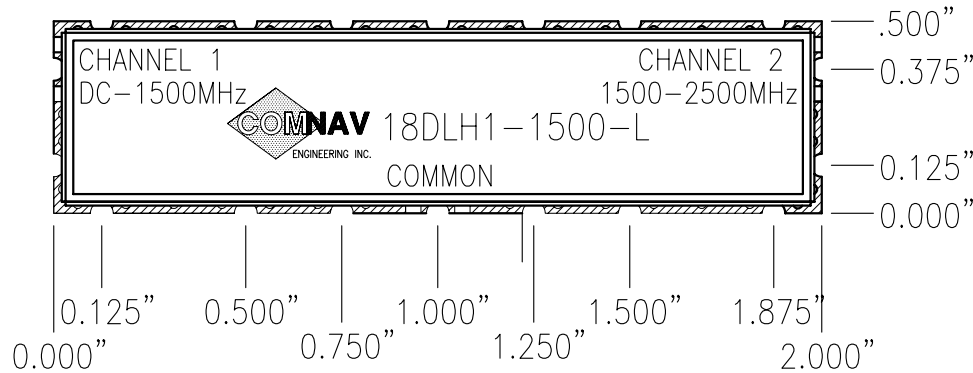
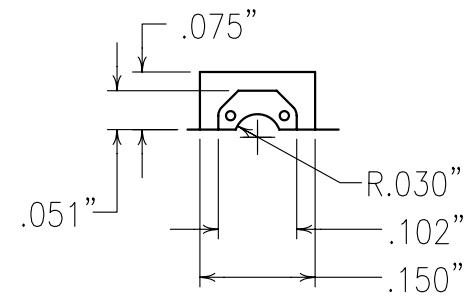
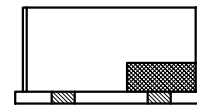
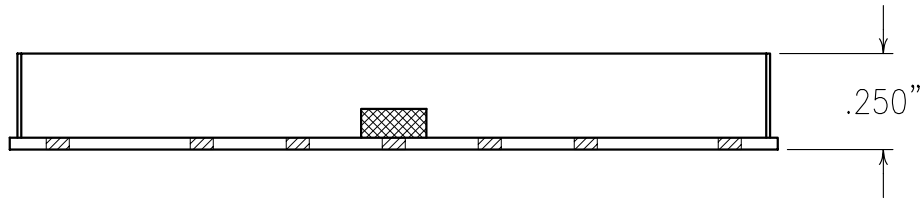


Confidential and Proprietary information of ComNav Engineering Inc. Do Not Duplicate or Use Without Permission. ComNav Engineering Inc. claims Copyright in this document as of the Creation, last revision, and last updated dates. All Rights Reserved.



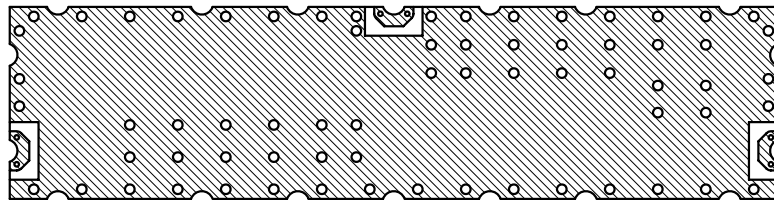
ELECTRICAL CHARACTERISTICS		
	CHANNEL 1	CHANNEL 2
3.0 dB BANDWIDTH	DC - 1500 MHz	1500 - 2500 MHz min.
PASSBAND	910 - 920 MHz	2400 - 2500 MHz
BASSBAND LOSS	≤ 0.5 dB	≤ 0.5 dB
VSWR	≤ 2.0:1	≤ 2.0:1
50 dB REJECTION	2400 - 2500 MHz	910 - 920 MHz
IMPEDANCE (OHMS)	50	50



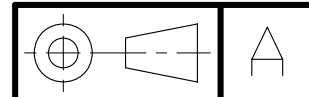
SCALE: 4:1

COPY

ALL CONNECTION PADS ARE AS SHOWN ABOVE.



COPPER



NOTES:
RECOMMENDED ATTACHMENT METHOD: SILVER EPOXY OR REFLOW AT A MAX. TEMP. OF 260° C FOR A MAX. OF 15 SECS.

ENGLISH / METRIC ENGLISH	CHECKED BY					
TOLERANCES UNLESS OTHERWISE SPECIFIED	DRAWN BY					
MACHINED SURFACES TO BE 125 OR BETTER	PBF	II	05FEB97	MJG	DEV.	INT. ISS. PER 0177
REMOVE ALL BURRS	ENGINEER	REV	DATE	BY	DCN No.	REMARKS
ENGLISH (INCHES)	METRIC (MM)	SCALE	APPLIC: COAXIAL FILTER			
.XX ± .02	.X ± .25	2:1	TITLE: 18DLH1-1500-L			
.XXX ± .01	.XX ± .13	DATE	06FEB97			SHEET NO/DF
ANGLES ± 0° 30'						1 1
	Material: N/A	DRAWING No. 010020				
	Finish: N/A					